

■ PERFORMANCE DATA

Duty cycle	100% at 110% of rated voltage
Magnet wire insulation	U.L. class N, 200°C [392°F] NEMA pub. No. MW 1000, section MW 35 – C [single]
Ambient temperature	100°C [212°F] continuous @ rated voltage
Input Voltage Range	85% to 110% of rated voltage
UL Rated (certificate available upon request)	

■ ENVIRONMENT PROTECTION

Rating	Connector Type
IP65	GO*
IP67	YO, WO
IP69K	NO, DO, JO
Thermal shock dunk	WO, NO, DO, JO

¹Passed environmental testing, but not as robust as other connectors

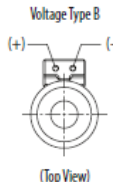
*Rating dependent on mating connector

■ ELECTRICAL SPECIFICATIONS

Voltage	12 DC	24 DC	115 AC	230 AC
Current (A)	1.92	0.96	0.22	0.11
Power (W)	23	23	23	23

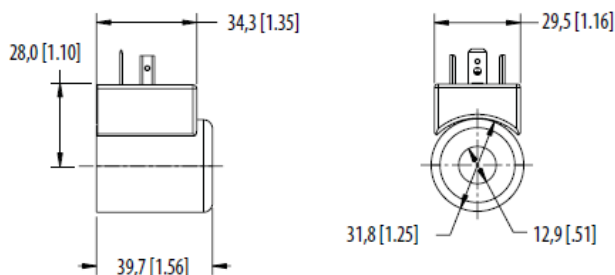
*Nominal voltage 25°C (77°F).

Diode Information

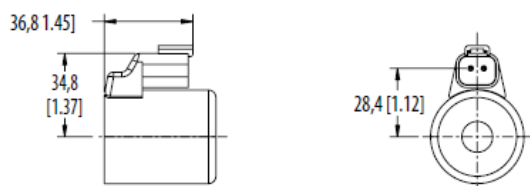


Flyback diode (arc suppressor), maximum recurrent peak reverse voltage - 800V

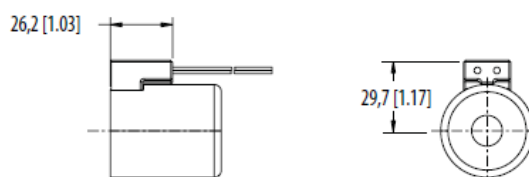
GO
DIN 43650



NO
Deutsch male DT04-2P integrated connector



WO
Leadwire



Model-Code:
Ordering-Example:

SP-SES - 08 - 012D G H OS

Design	SP-SES	- 08 -	012D	G	H	OS	
Size							OS = without plug (standard) G and N connector only
Voltage							H = high pressure design
Direct Current							Connector
012D = 12 V DC							G = DIN 43650
024D = 24 V DC							N = Deutsch (DC only)
Alternating Current							W = Flying Lead
120A = 120 V AC							- n/a - no cable
230A = 240 V AC							- 152 mm standard length with connector
							- 610 mm standard length with connector