

■ PERFORMANCE DATA

Duty cycle	100% at 110% of rated voltage
Magnet wire insulation	U.L. class N, 200°C [392°F] NEMA pub. No. MW 1000, section MW 35 – C [single]
Ambient temperature	100°C [212°F] continuous @ rated voltage
Input Voltage Range	85% to 110% of rated voltage
UL Rated (certificate available upon request)	

■ ENVIRONMENT PROTECTION

Rating	Connector Type
IP65	G0*
IP67	Y0, W0
IP69K	No, D0, J0
Thermal shock dunk	W0 <sup>1</sup> , N0, D0, J0

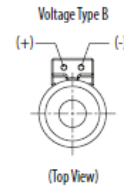
<sup>1</sup>Passed environmental testing, but not as robust as other connectors  
\*Rating dependent on mating connector

■ ELECTRICAL SPECIFICATIONS

Voltage	12 DC	24 DC	115 AC	230 AC
Current (A)	1.67	0.83	0.19	0.10
Power (W)	20	20	20	20

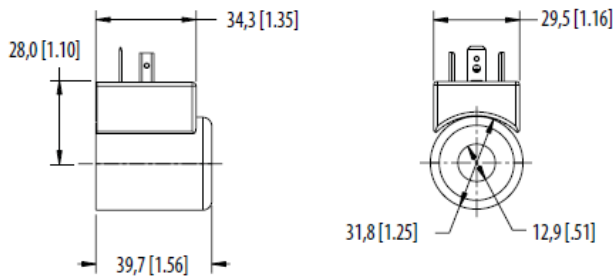
\*Nominal voltage 25°C (77°F).

Diode Information

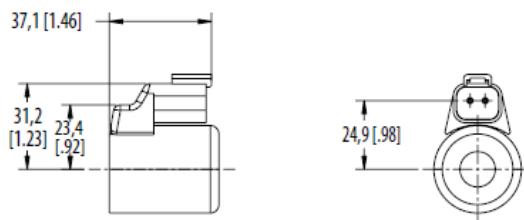


Flyback diode (arc suppressor), maximum recurrent peak reverse voltage - 800V

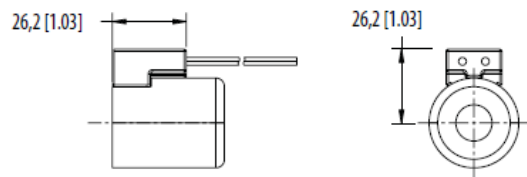
G0  
DIN 43650



N0  
Deutsch Male DT04-2P



W0  
Leadwire



Model-Code:

Ordering-Example:

SP-SES - 08 - 012DG OS

