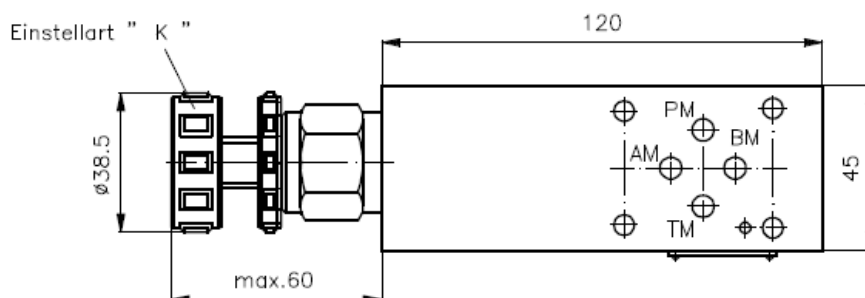
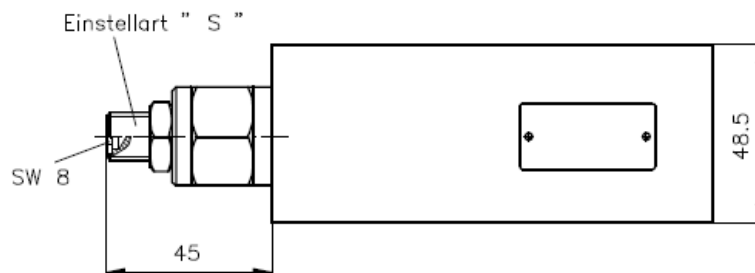
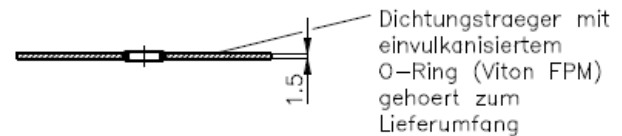
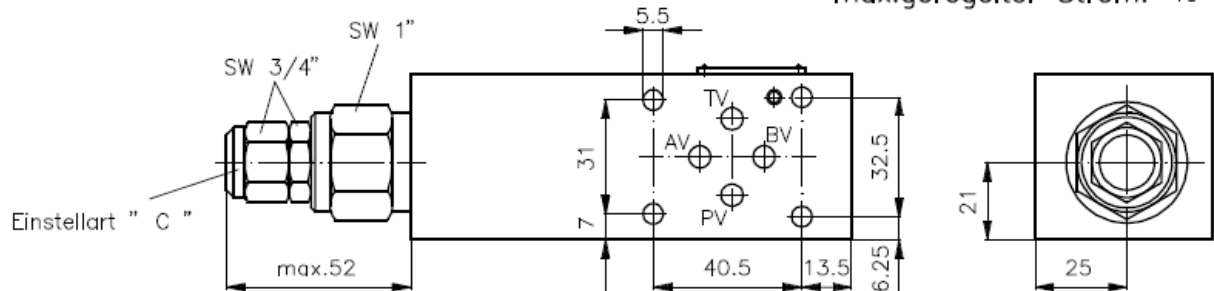


3-Wege-Stromregel-Ventil NG 6 (Zwischenplatte)

SR3Z-06.-PCV./.....

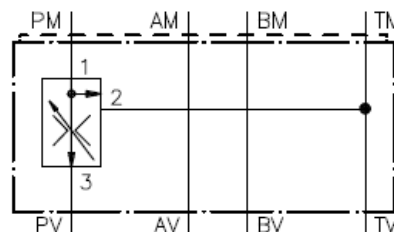
Gewicht: 1.6 kg

Nenndruck: 350 bar
Nennstrom: 60 l/min
max.geregelter Strom: 40 l/min



Symbol:

SR3Z-06S-PCV./...



Technische Daten:

Weitere Angaben zum 3-Wege-Vorzugs-Stromregelventil BFCV-10.-.-0-.. siehe Massblatt-Nr.: CF-400-101

Bestell-Schlüssel:

Bestell-Beispiel:

SR3Z-06S-PCVC/06.00

Geraetaeusfuehrung
Baugroesse + Werkstoff
06S= Stahl (9SMnPb28K)
Ausfuehrungsfunktion
P = in P wirkend
Stromregelventil
CV = BFCV-10.-..

gewuenschter geregelter Oilstrom
(BFCV) in Gpm angeben
1 l/min = 0.265 Gpm
(1 Gpm = 3.785 l/min)
Einstellart
S = Schraubenspindel
C = Verschlusskappe
K = Handrad