

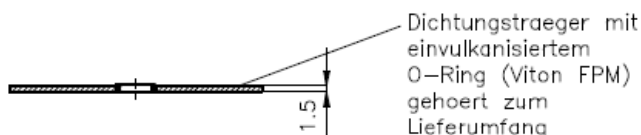
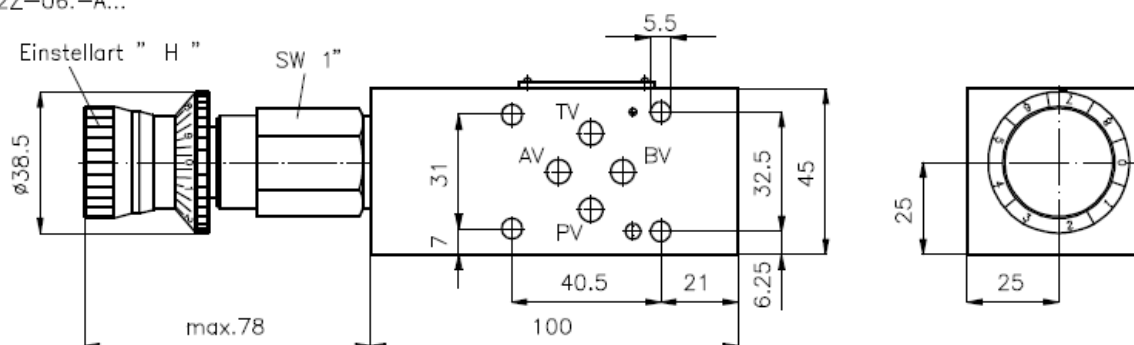
## 2-Wege-Stromregel-Ventil NG 6 (Zwischenplatte)

SR2Z-06-....

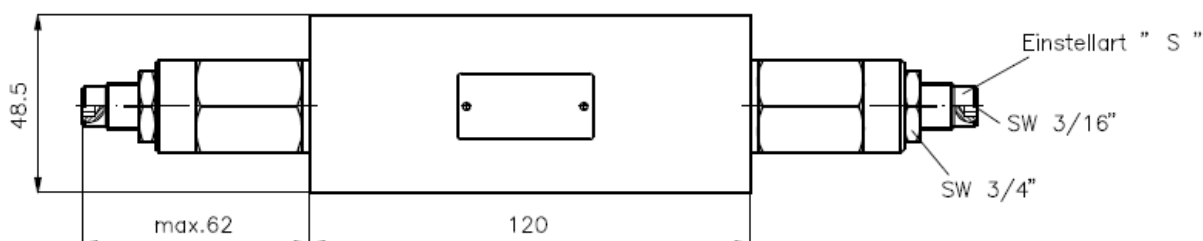
Gewicht: ca. 0.5 kg (A)  
ca. 1.0 kg (S)

Nenndruck: 250 bar (A)  
350 bar (S)

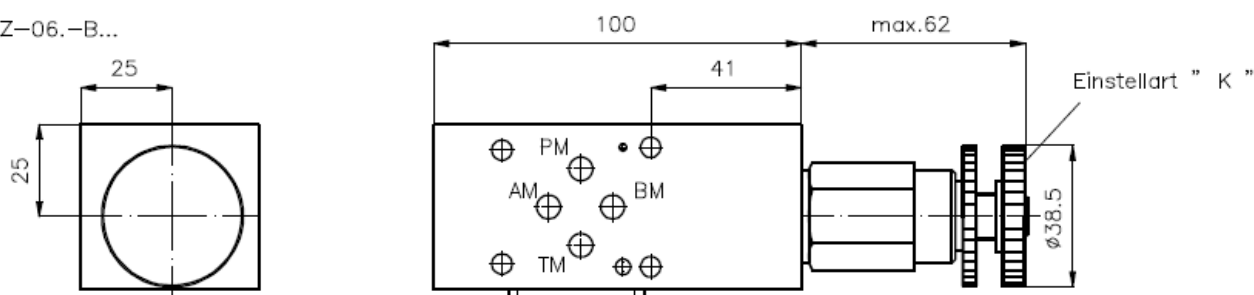
SR2Z-06.-A...



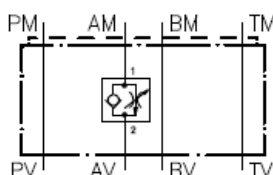
SR2Z-06.-A+B...



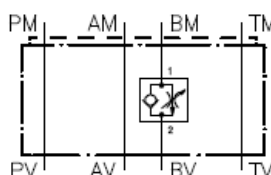
SR2Z-06.-B...



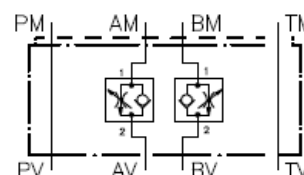
Symbol: SR2Z-06.-AR1.



SR2Z-06.-BR1.



SR2Z-06.-A+BR1.



### Technische Daten:

Weitere Angaben zum 2-Wege-Stromregelventil FAR1-10.-.-0-.. siehe Massblatt-Nr.: MF-200-101  
Hinweis: Zulauf- oder Ablaufregelung durch Drehen des Ventils um die Laengsachse

### Bestell-Schluesself:

#### Bestell-Beispiel:

SR2Z-06A-AR1K

Geraetebauart  
Baugroesse + Werkstoff  
06A = Alu (F 37)  
06S = Stahl (9SMnPb28K)  
Ausfuehrungsfunktion  
A = in A wirkend  
B = in B wirkend  
A+B = in A und B wirkend

Einstellart  
S = Schraubenspindel  
K = Handrad  
H = Skalenverstellung  
Stromregelventil  
R1 = FAR1-10.-..