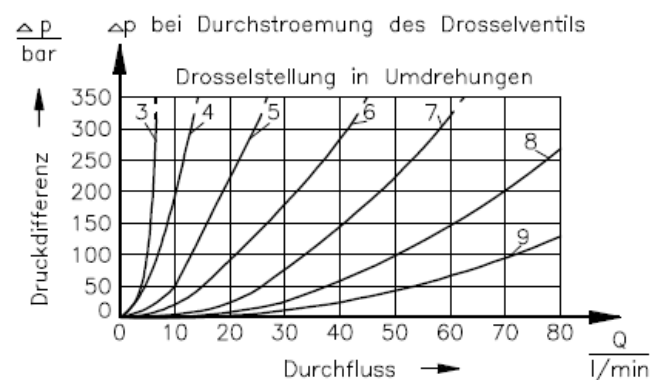
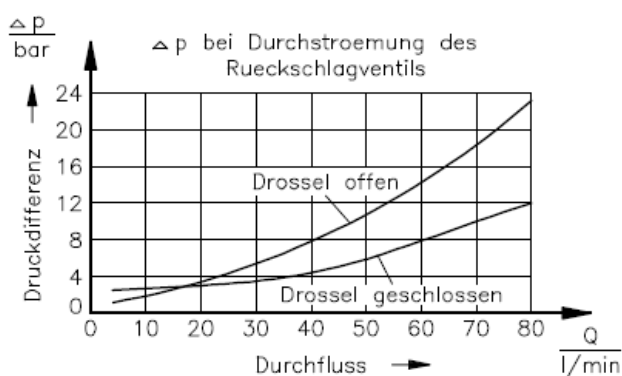
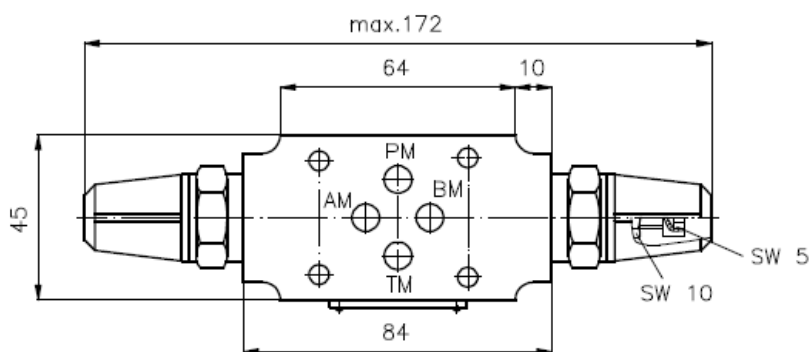
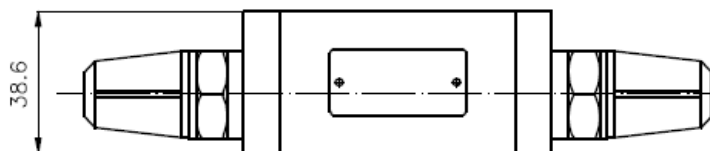
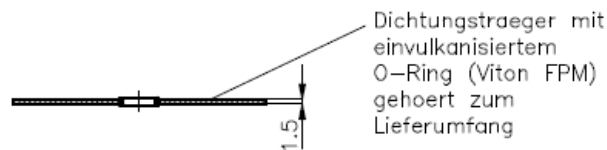
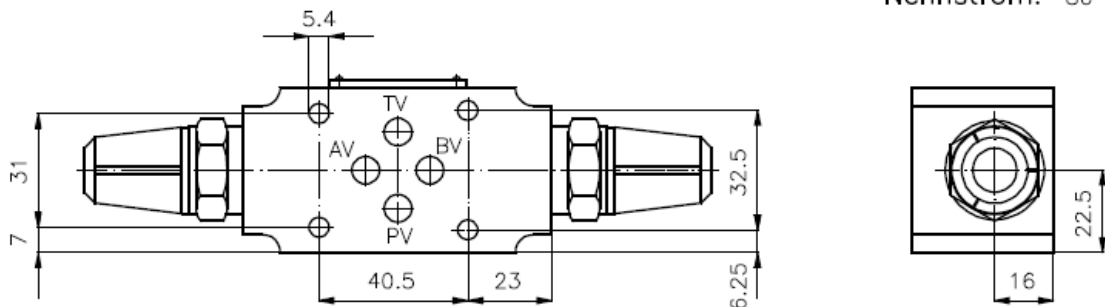


Drossel-Rückschlag-Ventil NG 6 (Zwischenplatte)

DVZ-06-A+B

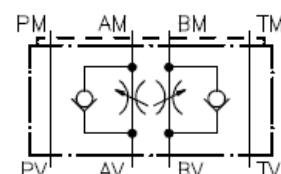
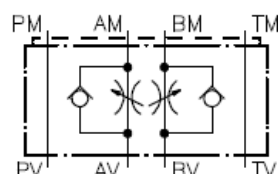
Gewicht: ca. 1.2 kg

Nenndruck: 320 bar
Nennstrom: 80 l/min



Symbol: Durchfluss **zum** Verbraucher gedrosselt

Durchfluss **vom** Verbraucher gedrosselt



Hinweis:

Zulauf- oder Ablaufregelung durch Drehen des Ventils um die Laengsachse.