

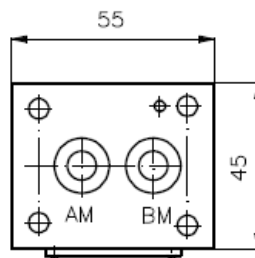
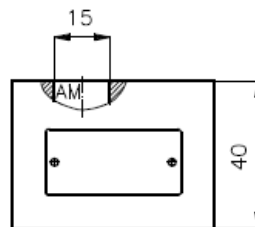
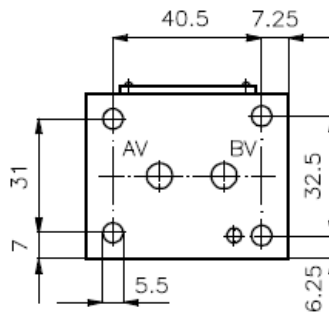
# Stromgleichrichter NG 6 (Zwischenplatte)

SG.-06.

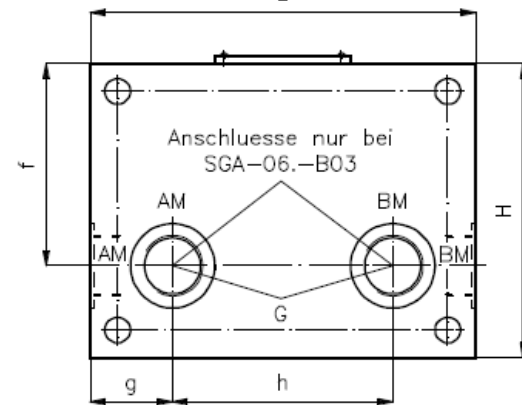
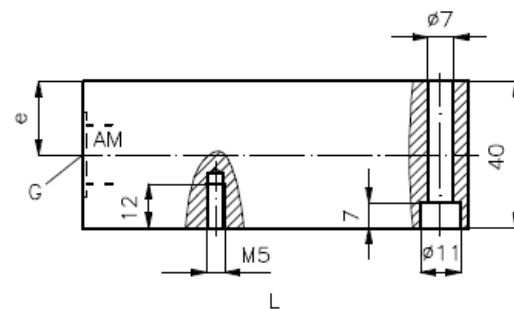
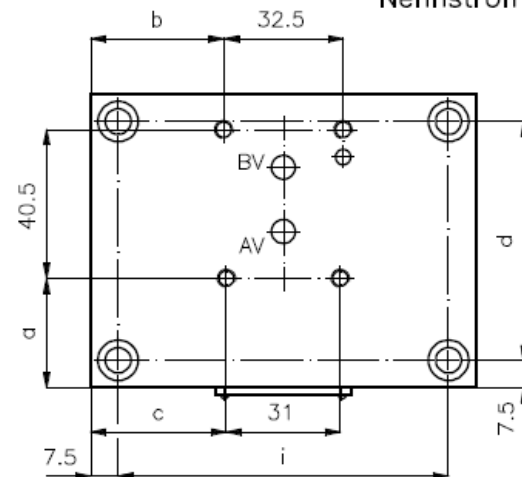
Gewicht: siehe Tabelle

Nenndruck: 250 bar (A)  
350 bar (S)

Nennstrom: 30 l/min



SGZ-06S

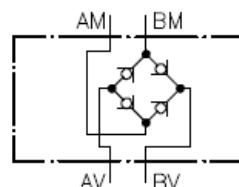


SGA-06.-B02  
SGA-06.-B03

Typ	G	L	H	a	b	c	d	e	f	g	h	i	Gewicht (kg)	
													A	S
SGZ-06S	/	/	/	/	/	/	/	/	/	/	/	/	/	0.6
SGA-06.-B02	G 1/4"	85	70	13.0	26.25	27	55	15	/	/	/	70	0.7	1.9
SGA-06.-B03	G 3/8"	105	80	29.8	36.25	37	65	20	55	22.5	60	90	1.0	2.1

Symbol:

SGZ-06S  
SGA-06.-B02



SGA-06.-B03

