

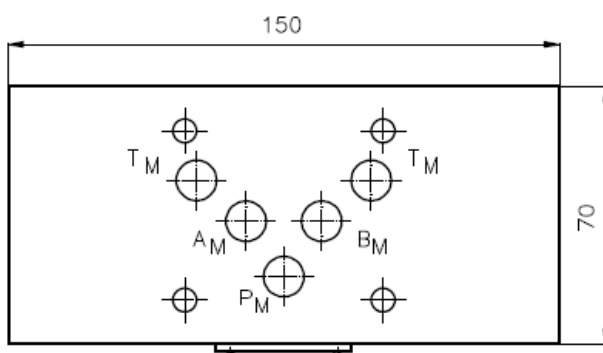
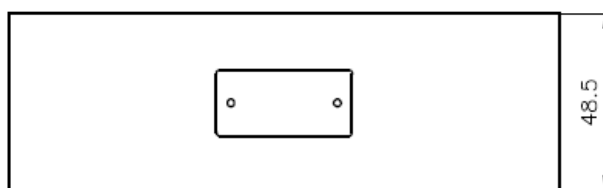
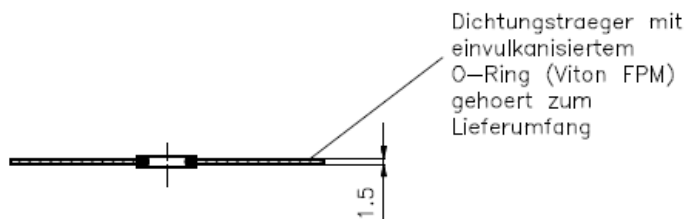
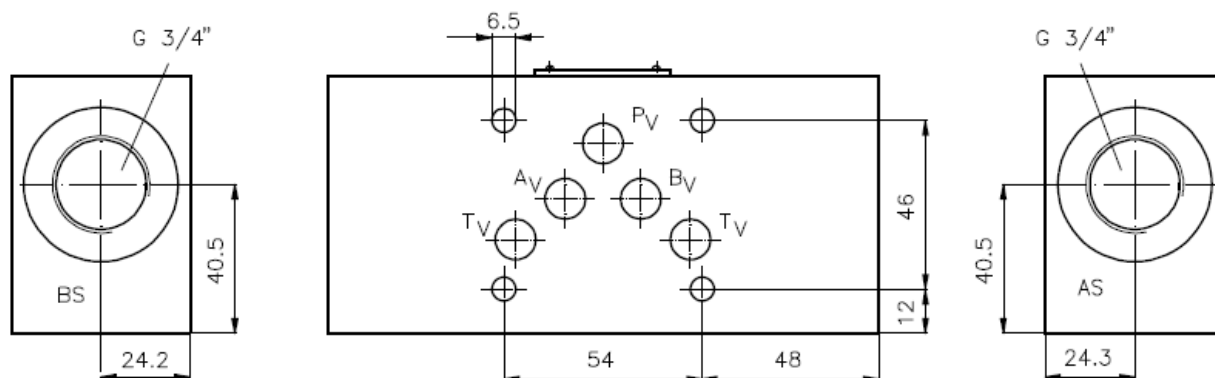
Nachsaug-Ventil NG 10 (Zwischenplatte) G 3/4" extern

NSZ-10.-A+B

Gewicht: ca. 1.8 kg (A)
ca. 3.1 kg (S)

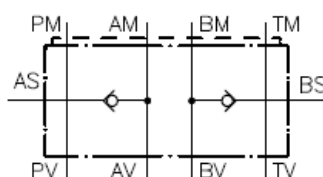
Nenndruck: 250 bar (A)
350 bar (S)

Nennstrom: 50 l/min



Symbol:

NSZ-10A-A+B
NSZ-10S-A+B



Technische Daten:

Offnungsdruck: ca. 0.2 bis 0.3 bar
Einbau-Rueckschlagventil: RKVC-10 siehe Massblatt-Nr.: IC-210-000