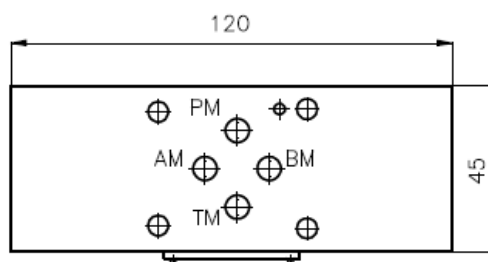
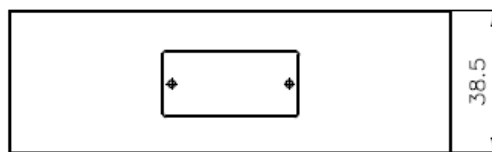
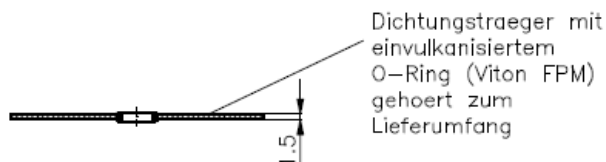
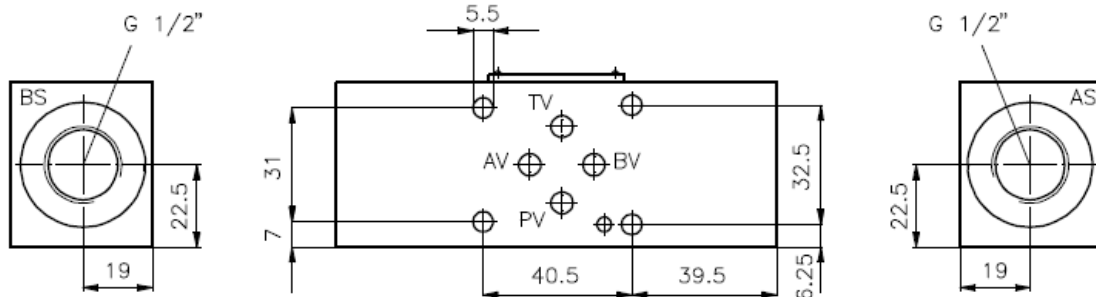


Nachsaug-Ventil NG 6 (Zwischenplatte) G 1/2" extern

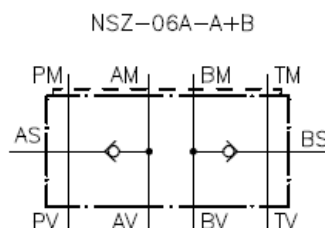
NSZ-06A-A+B

Gewicht: ca. 0.6 kg

Nenndruck: 250 bar
Nennstrom: 30 l/min



Symbol:



Technische Daten:

Öffnungsdruck: ca. 0.5 bar
Einbau-Rueckschlagventil: RKVC-08 siehe Massblatt-Nr.: IC-210-000