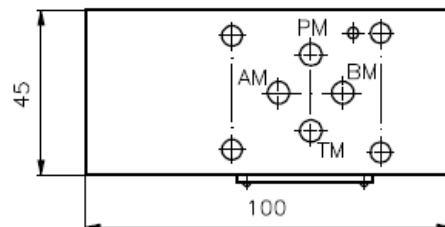
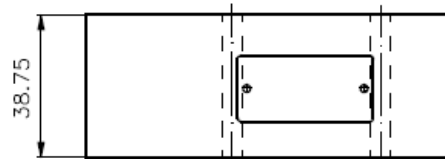
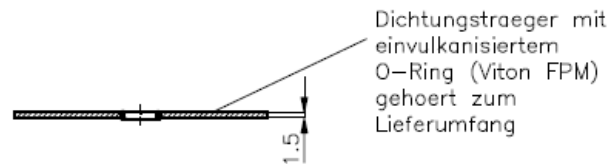
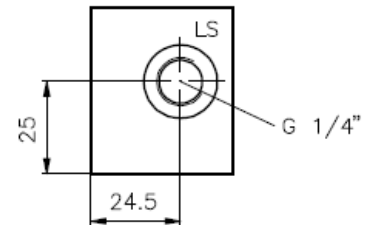
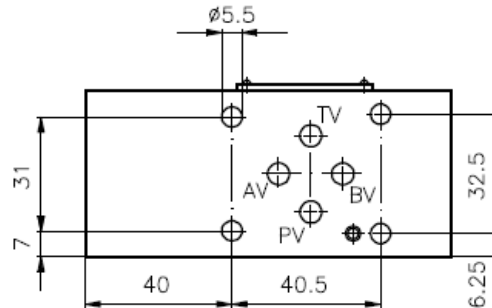


# Wechsel-Rückschlag-Ventil NG 6 ((Zwischenplatte) von A + B extern nach LS)

RLSZ-06.-B02

Gewicht: ca. 0.5 kg (A)  
ca. 1.4 kg (S)

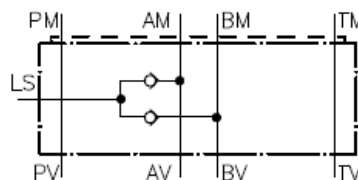
Nenndruck: 250 bar (A)  
350 bar (S)



Durchgangsbohrungen:  
P; T; A; B:  $\varnothing 6$

Symbol:

RLSZ-06A-B02 (Alu)  
RLSZ-06S-B02 (Stahl)



Technische Daten:

Rueckschlagventil: RKVE-04 siehe Massblatt-Nr.: IC-160-000