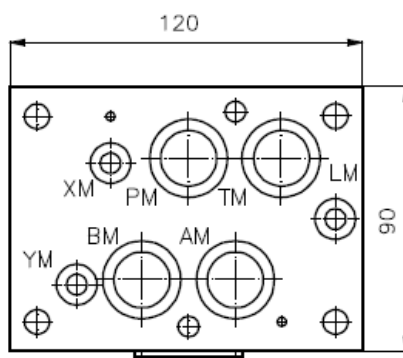
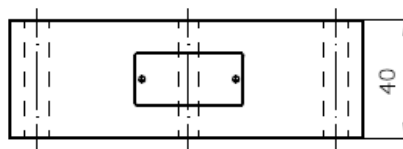
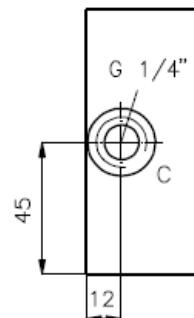
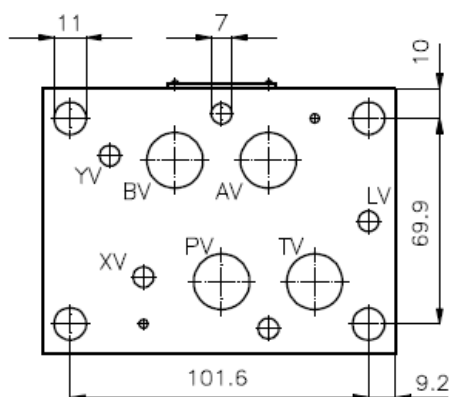


# Wechsel-Rückschlag-Ventil NG 16 ((Zwischenplatte) Anschluss C extern)

WRVZ-16.-CB

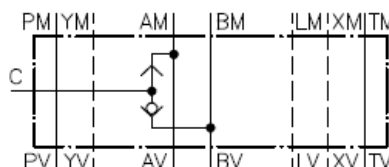
Gewicht: ca. 1.0 kg (Alu)  
ca. 2.6 kg (Stahl)

Nennndruck: 250 bar (A)  
350 bar (S)



Symbol:

WRVZ-16A-CB (Alu)  
WRVZ-16S-CB (Stahl)



Technische Daten:

Wechsel-Rueckschlagventil: WRVCG-04 siehe Massblatt-Nr.: IC-310-000

Zum Lieferumfang gehoeren: 4 Stck. O-Ring 22.22 x 2.62  
3 Stck. O-Ring 9.13 x 2.62