

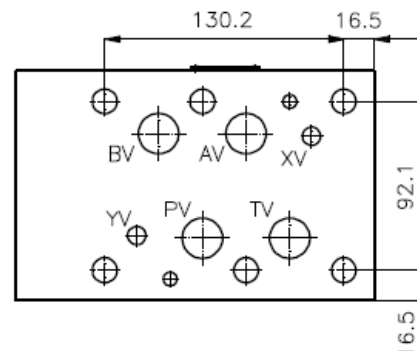
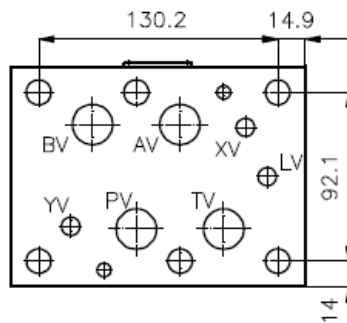
Rückschlag-Ventil-Platten NG 25 (Zwischenplatte)

RVZ-25-...

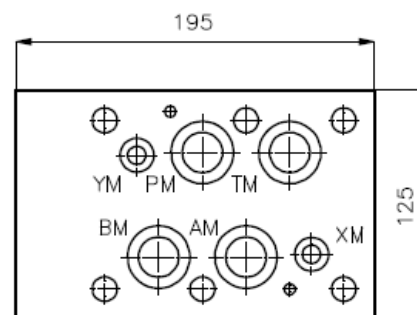
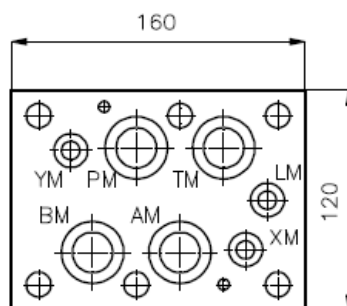
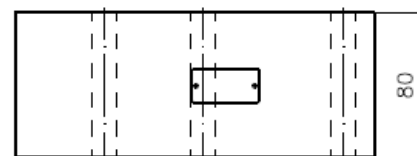
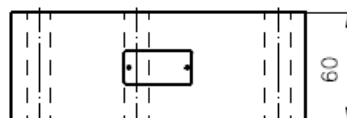
Gewicht: ca. 3.2 kg (A)
bzw. ca. 9.0 kg (S)

Nenndruck: 250 bar (A)
350 bar (S)

Nennstrom: 240 l/min



Ausführung Typ
RVZV-25S-T/6,0 bar
statt 60 mm
Ventildicke 80 mm



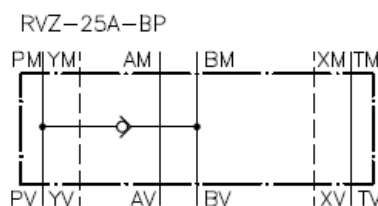
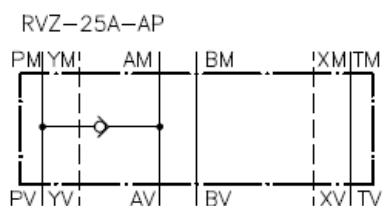
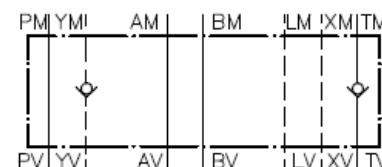
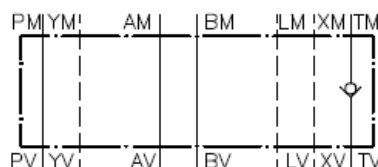
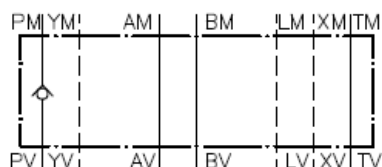
RVZ-25.-P
RVZ-25.-T
RVZ-25A-T+Y

RVZ-25A-AP
RVZ-25A-BP

Symbol: RVZ-25A-P (Alu)
RVZ-25S-P (Stahl)

RVZ-25A-T (Alu)
RVZ-25S-T (Stahl)
RVZV-25S-T/6.0 bar (Stahl)

RVZ-25A-T+Y (Alu)



Technische Daten:

Öffnungsdruck: ca. 0.2 bis 0.3 bar (serienmaessig), hoehere Druেকে auf Anfrage
freie Durchflussrichtung: siehe Symbole

Zum Lieferumfang gehoeren: 3 Stck. O-Ring 28.17 x 3.53
3 Stck. O-Ring 14.00 x 2.65 (2 Stck. bei RVZ-25A-T+Y)
2 Stck. O-Ring 34.00 x 2.50
2 Stck. O-Ring 16.00 x 1.50 (bei RVZ-25A-T+Y)