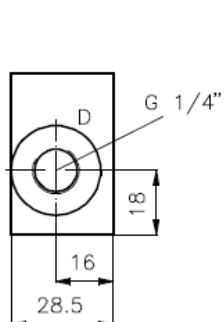


Rückschlag-Ventil-Platten NG 6 (Zwischenplatte)

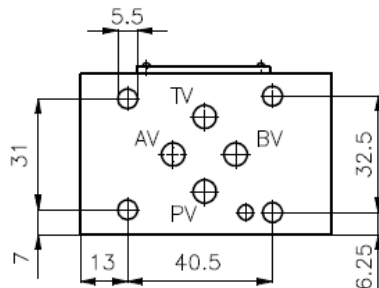
RZ-06S-..

Gewicht: ca. 0.5 kg
bzw. ca. 0.7 kg (6 bar, PD)

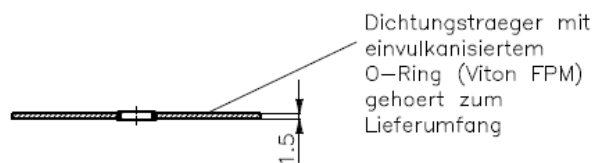
Nenndruck: 350 bar
Nennstrom: 30 l/min



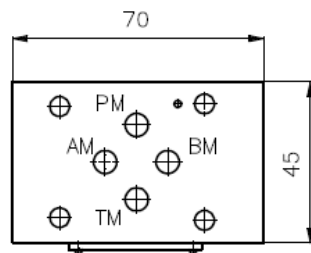
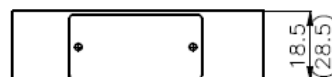
Anschluss D nur bei
Ausführung "PD" (G 1/4")



Ausführung Typ **RZV-06S-P/6,0 bar**
und Typ **RZV-06S-T/6,0 bar**
statt 18,5 Ventildicke 28,5 mm

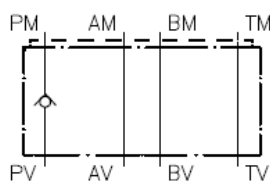


Dichtungstraeger mit
einvulkanisiertem
O-Ring (Viton FPM)
gehört zum
Lieferumfang

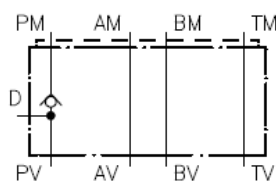


Symbol:

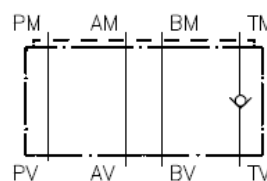
RZ-06S-P
RZV-06S-P/6,0 bar



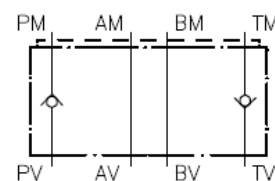
RZ-06S-PD (G 1/4")



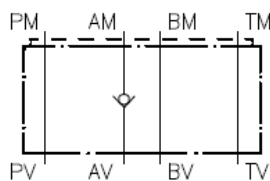
RZ-06S-T
RZV-06S-T/6,0 bar



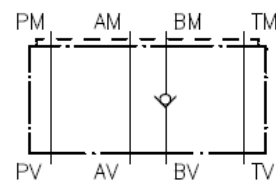
RZ-06S-P+T



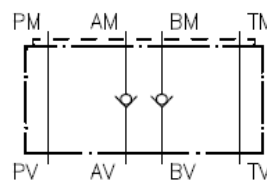
RZ-06S-A



RZ-06S-B



RZ-06S-A+B



Technische Daten:

Öffnungsdruck:
freie Durchflussrichtung:

ca. 0.2 bis 0.3 bar (serienmaessig), hoehere Druেকে auf Anfrage
siehe Symbole