

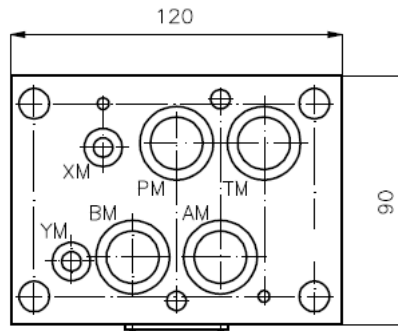
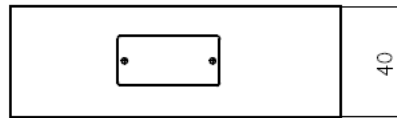
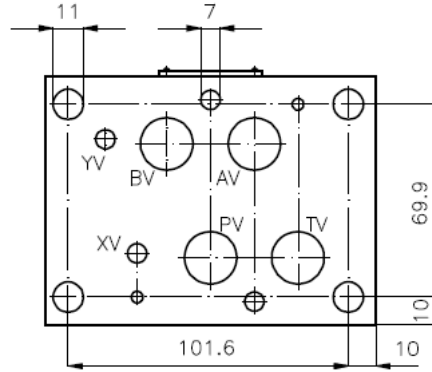
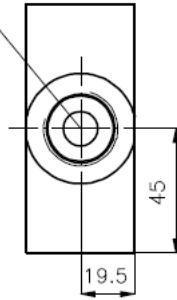
Mehrzweck-Gehäuse-Zwischenplatte NG 16 (von P1 nach T2)

MGZ-16.-P1/T2/12-04

Gewicht: ca. 1.1 kg (A)
ca. 3.0 kg (S)

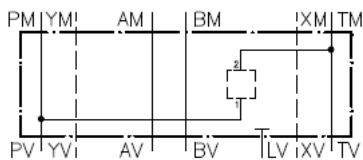
Nenndruck: 250 bar (A)
350 bar (S)

Aufnahmebohrung
C-12-2
siehe Massblatt-Nr.:
IK-100-129

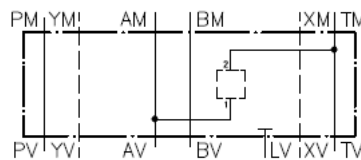


Symbol:

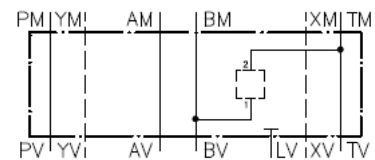
MGZ-16.-P1/T2/12



MGZ-16.-A1/T2/12



MGZ-16.-B1/T2/12



Bestell-Schlüssel:

Bestell-Beispiel:

MGZ-16A-P1/T2/12

Geraeteausfuehrung _____ Aufnahmebohrung
Baugroesse und Werkstoff _____ Serie 12
16A = Alu (F 37) _____ Ausfuehrung
16S = Stahl (9SMnPb28K bzw. GGG-40)

Zum Lieferumfang gehoeren: 4 Stck. O-Ring 22.22 x 2.62
2 Stck. O-Ring 9.19 x 2.62