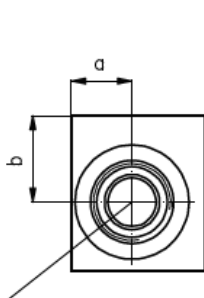
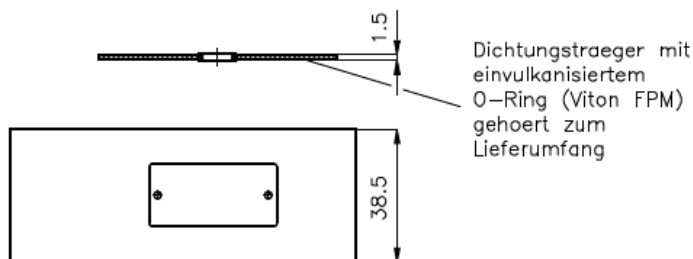
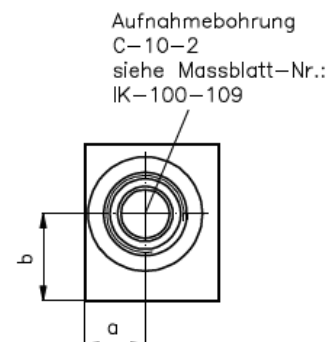
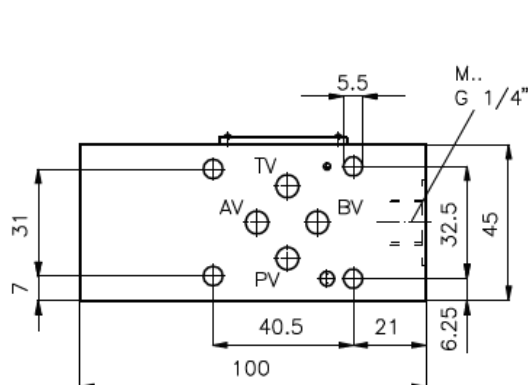


# Mehrzweckventilgehäuse NG 6 mit Lochbild nach DIN 24340, Form A - Zwischenplattenbauweise

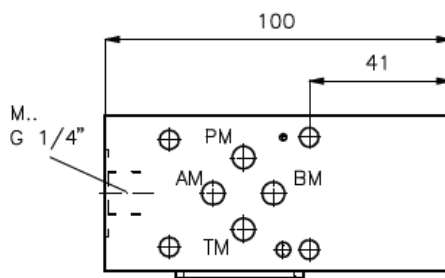
MGZ-06.-..

Gewicht: ca. 0.5 kg (A)  
ca. 1.0 kg (S)

Nenndruck: 250 bar (A)  
350 bar (S)



Aufnahmebohrung  
C-10-2  
siehe Massblatt-Nr.:  
IK-100-109



## Mehrzweckventilgehäuse ohne Messanschluss

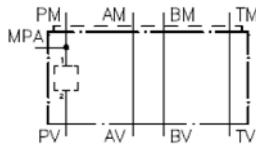
Typ	a	b
MGZ-06.-PM2/PV1/10-B-04	21,5	22,5
MGZ-06.-TM1/TV2/10-B-04	21,5	22,5
MGZ-06.-AA/10-04	17,5	25
MGZ-06.-BB/10-04	17,5	25
MGZ-06.-A1/P2/10-04	17	22,5
MGZ-06.-A1/T2/10-04	17	22,5
MGZ-06.-A2/P1/10-04	17,5	20
MGZ-06.-A2/T1/10-04	17,5	20
MGZ-06.-B1/P2/10-04	17	22,5
MGZ-06.-B1/T2/10-04	17	22,5
MGZ-06.-B2/P1/10-04	17,5	20
MGZ-06.-B2/T1/10-04	17,5	20
MGZ-06.-A1/B2/10-04	19,5	24

## Mehrzweckventilgehäuse mit Messanschluss

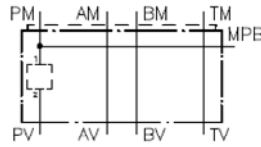
Typ	a	b
MGZ-06.-PM1/PV2/10+MPA-04	17	22,5
MGZ-06.-PM1/PV2/10+MPB-04	17	22,5
MGZ-06.-TM2/TV1/10+MTA-04	17	22,5
MGZ-06.-TM2/TV1/10+MTB-04	17	22,5
MGZ-06.-P1/T2/10+MPA-04	17	22,5
MGZ-06.-P2/T1/10+MTA-04	17	22,5
MGZ-06.-P2/T1/10+MPB-04	17	22,5
MGZ-06.-P1/T2/10+MTB-04	17	22,5

Mehrzweckventilgehäuse mit Messanschluss

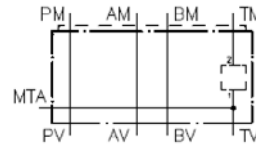
MGZ-06.-PM1/PV2/10+MPA-04



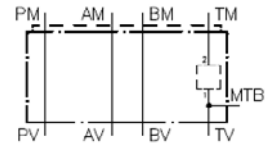
MGZ-06.-PM1/PV2/10+MPB-04



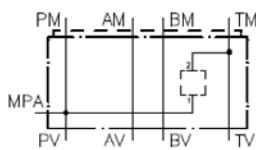
MGZ-06.-TM2/TV1/10+MTA-04



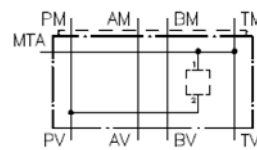
MGZ-06.-TM2/TV1/10+MTB-04



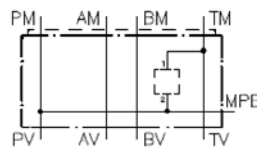
MGZ-06.-P1/T2/10+MPA-04



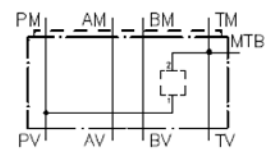
MGZ-06.-P2/T1/10+MTA-04



MGZ-06.-P2/T1/10+MPB-04

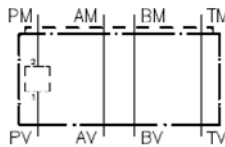


MGZ-06.-P1/T2/10+MTB-04

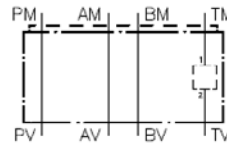


Mehrzweckventilgehäuse ohne Messanschluss

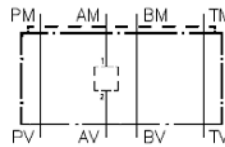
MGZ-06.-PM2/PV1/10-B-04



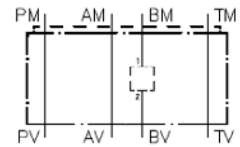
MGZ-06.-TM1/TV2/10-B-04



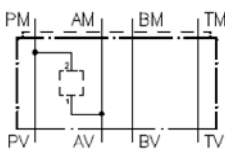
MGZ-06.-AA/10-04



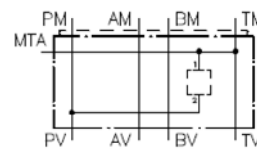
MGZ-06.-BB/10-04



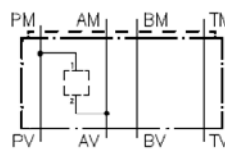
MGZ-06.-A1/P2/10-04



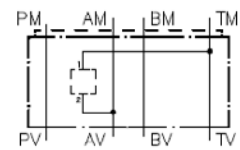
MGZ-06.-A1/T2/10-04



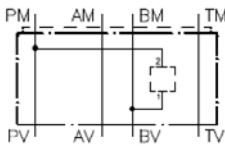
MGZ-06.-A2/P1/10-04



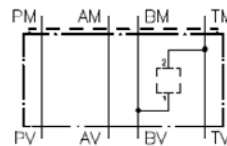
MGZ-06.-A2/T1/10-04



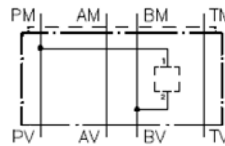
MGZ-06.-B1/P2/10-04



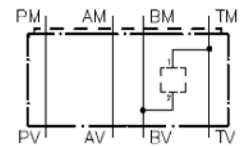
MGZ-06.-B1/T2/10-04



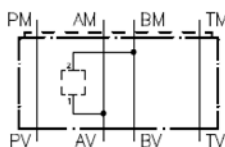
MGZ-06.-B2/P1/10-04



MGZ-06.-B2/T1/10-04



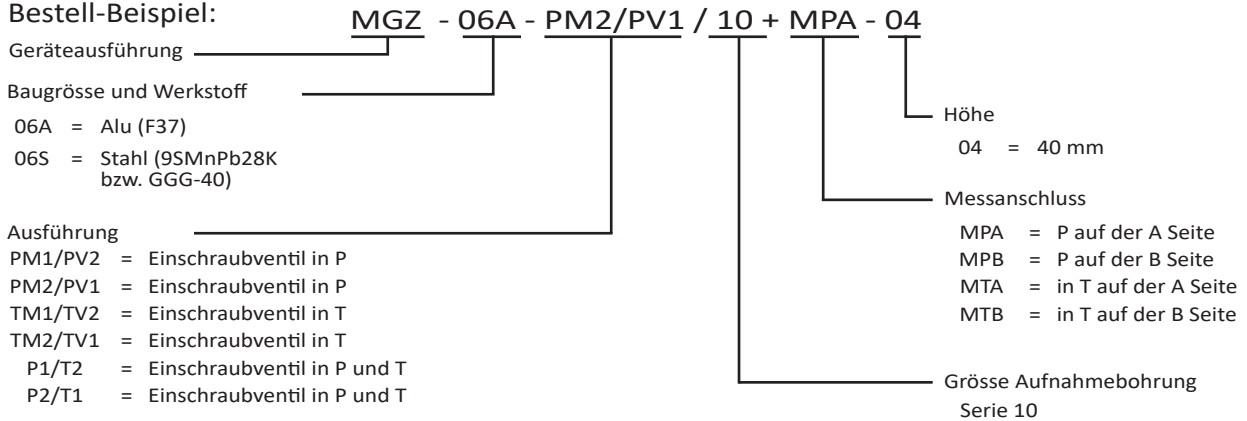
MGZ-06.-A1/B2/10-04



### Mehrzweckventilgehäuse mit Messanschluss

**Bestell-Schlüssel:**

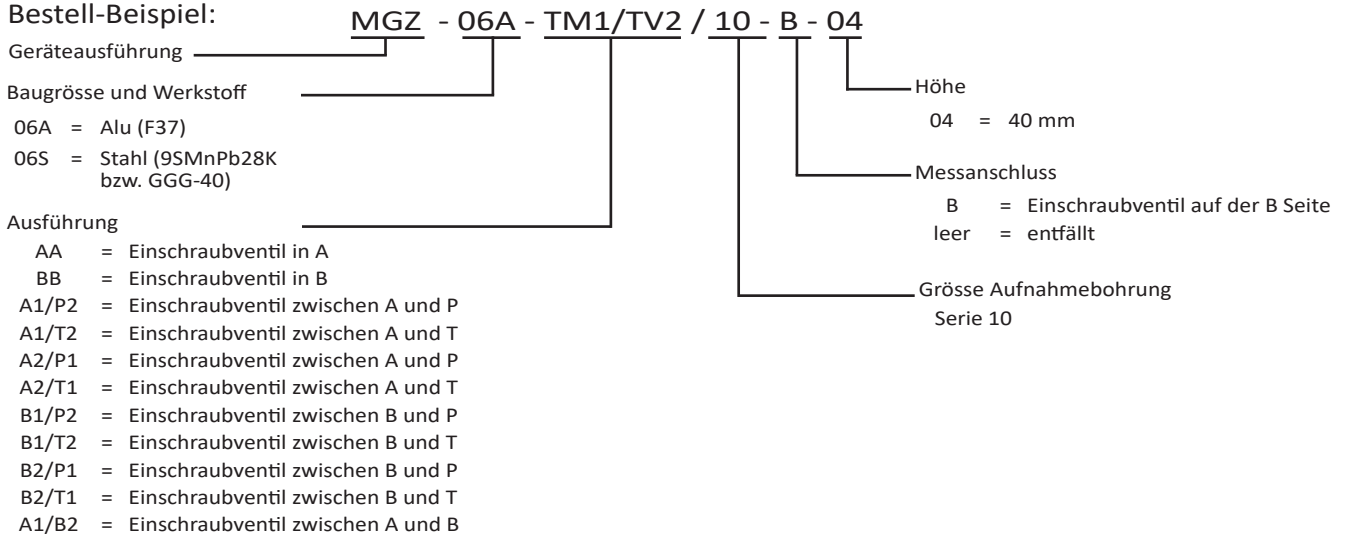
**Bestell-Beispiel:**



### Mehrzweckventilgehäuse ohne Messanschluss

**Bestell-Schlüssel:**

**Bestell-Beispiel:**



**Hinweis:**

Bezuglich der Durchflussrichtung ist auf die Darstellung (Anschlusse "1" und "2") zu achten. Fuer die Ausfuehrungen AA und BB aendert sich durch Drehen des Mehrzweckventilgehäuses NG 6 um die Laengsachse die Durchflussrichtung: z.B. von 1 nach 2 in 2 nach 1 oder umgekehrt (siehe Symboldarstellung). Fuer alle Ventilplatten NG 6 mit Funktion in P bzw. in T aendert sich durch Drehen um die Laengsachse zusaetzlich der Kanal: d.h. P wird T und T wird P