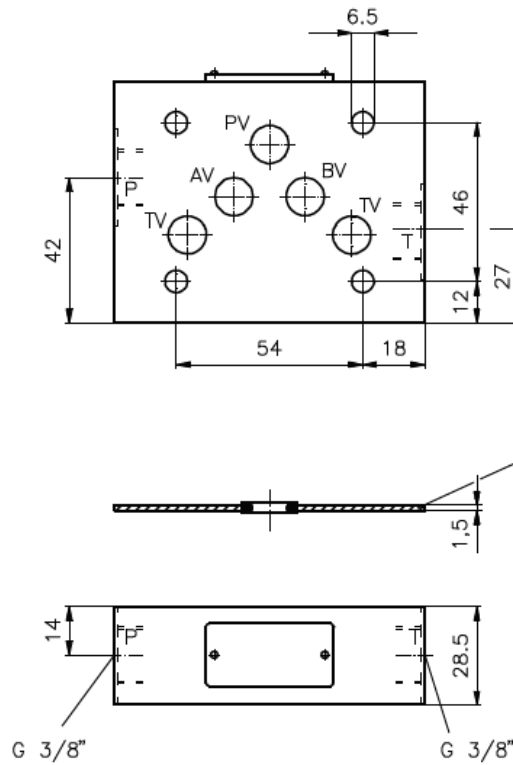


# Einspeise-Zwischenplatte NG 10 (in P+T)

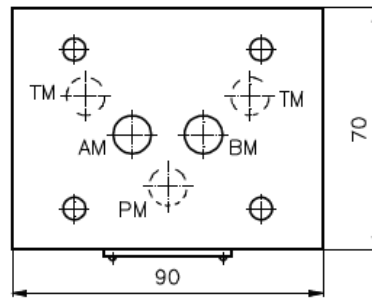
EPZ-10.-P+T-B..

Gewicht: ca. 0.4 kg

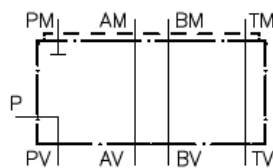
Nenndruck: 250 bar



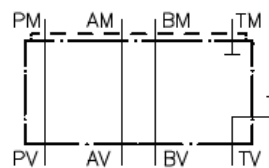
Dichtungstraeger mit  
einvulkanisiertem  
O-Ring (Viton FPM)  
gehört zum  
Lieferumfang



Symbol: EPZ-10A-P-B03 (G 3/8")



EPZ-10A-T-B03 (G 3/8")



EPZ-10A-P+T-B03 (G 3/8")

