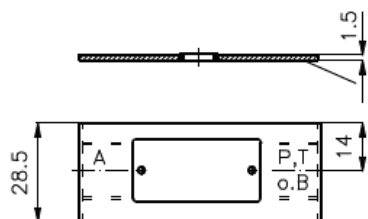
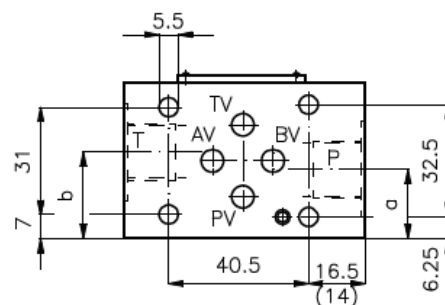
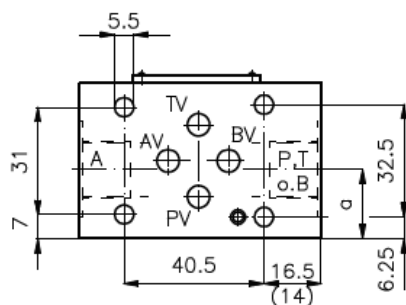


Einspeise-Zwischenplatte NG 6 (in P+T)

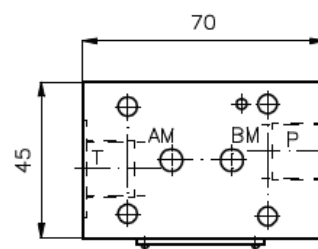
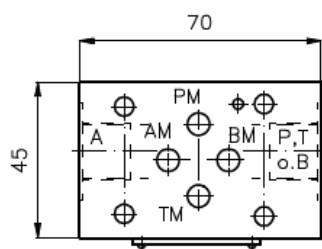
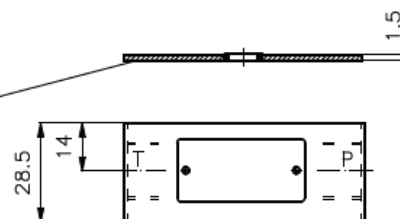
EPZ-06.-P+T-B..

Gewicht: ca. 0.3 kg (A)
ca. 0.7 kg (S)

Nenndruck: 250 bar (A)
350 bar (S)



Dichtungsträger mit einvulkanisiertem O-Ring (Viton FPM) gehört zum Lieferumfang

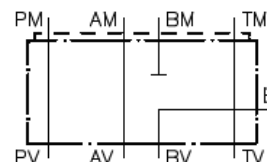
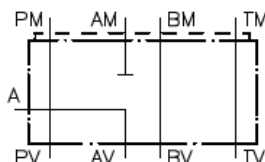


| Typ | a |
|---------------|------|
| EPZ-06.-A-B02 | 22.5 |
| EPZ-06.-B-B02 | 22.5 |
| EPZ-06.-P-B02 | 18.5 |
| EPZ-06.-P-B03 | 20.0 |
| EPZ-06.-T-B02 | 26.5 |
| EPZ-06.-T-B03 | 25.0 |

| Typ | a | b |
|-----------------|------|------|
| EPZ-06.-P+T-B02 | 18.5 | 26.5 |
| EPZ-06.-P+T-B03 | 20.0 | 25.0 |
| EPZ-06.-P+P-B02 | 18.5 | 18.5 |
| EPZ-06.-P+P-B03 | 20.0 | 20.0 |

Symbol:

EPZ-06.-A-B02 (G 1/4") EPZ-06.-B-B02 (G 1/4")



EPZ-06.-P-B02 (G 1/4")
EPZ-06.-P-B03 (G 3/8")

EPZ-06.-T-B02 (G 1/4")
EPZ-06.-T-B03 (G 3/8")

EPZ-06.-P+T-B02 (G 1/4")
EPZ-06.-P+T-B03 (G 3/8")

EPZ-06.-P+P-B02 (G 1/4")
EPZ-06.-P+P-B03 (G 3/8")

