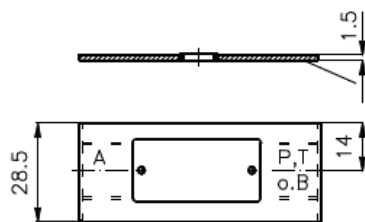
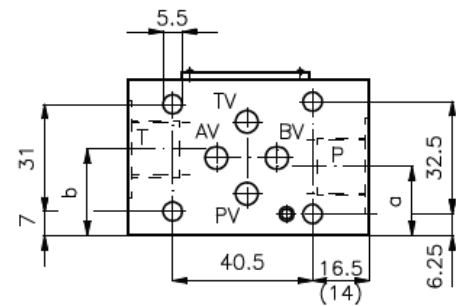
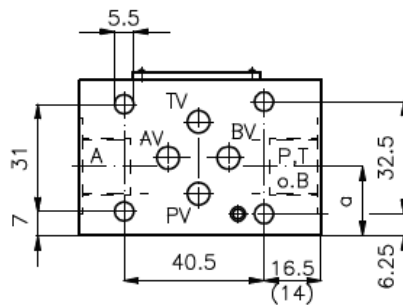


Einspeise-Zwischenplatte NG 6 (in P)

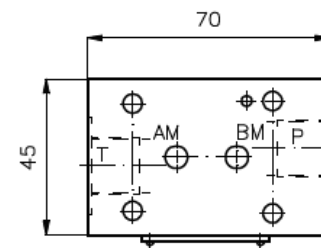
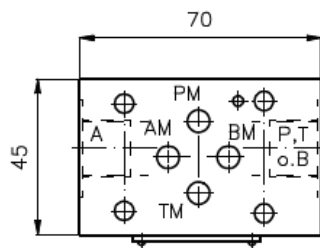
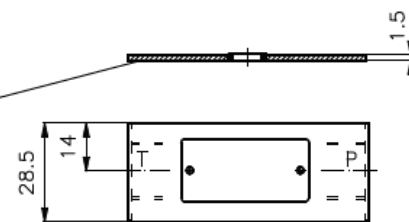
EPZ-06.-P-B..

Gewicht: ca. 0.3 kg (A)
ca. 0.7 kg (S)

Nenndruck: 250 bar (A)
350 bar (S)



Dichtungsträger mit
einvulkanisiertem
O-Ring (Viton FPM)
gehört zum
Lieferumfang

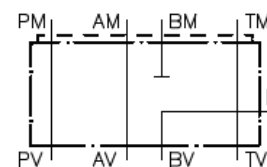
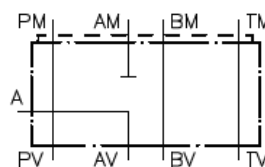


Typ	a
EPZ-06.-A-B02	22.5
EPZ-06.-B-B02	22.5
EPZ-06.-P-B02	18.5
EPZ-06.-P-B03	20.0
EPZ-06.-T-B02	26.5
EPZ-06.-T-B03	25.0

Typ	a	b
EPZ-06.-P+T-B02	18.5	26.5
EPZ-06.-P+T-B03	20.0	25.0
EPZ-06.-P+P-B02	18.5	18.5
EPZ-06.-P+P-B03	20.0	20.0

Symbol:

EPZ-06.-A-B02 (G 1/4") EPZ-06.-B-B02 (G 1/4")



EPZ-06.-P-B02 (G 1/4")
EPZ-06.-P-B03 (G 3/8")

EPZ-06.-T-B02 (G 1/4")
EPZ-06.-T-B03 (G 3/8")

EPZ-06.-P+T-B02 (G 1/4")
EPZ-06.-P+T-B03 (G 3/8")

EPZ-06.-P+P-B02 (G 1/4")
EPZ-06.-P+P-B03 (G 3/8")

