

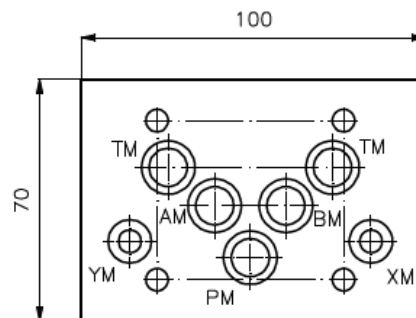
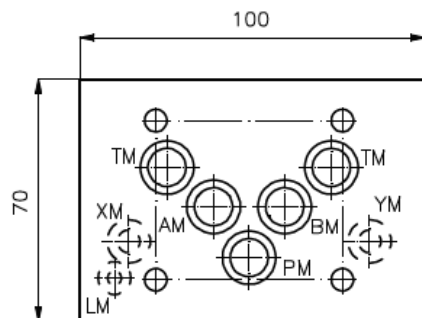
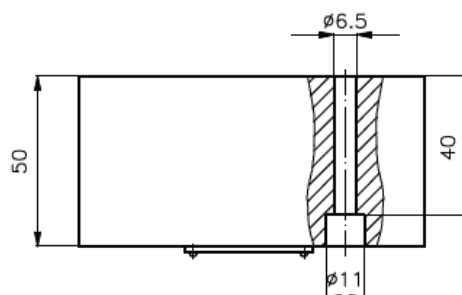
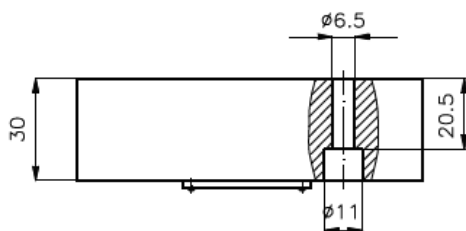
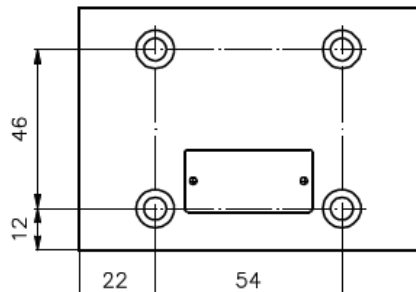
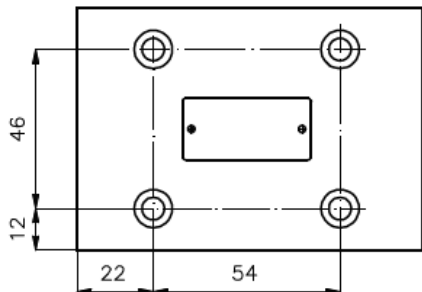
# Umlenk-Platten NG 10

P mit T, X mit Y verbunden, A und B verschlossen

UP-10.-PT+XY

Gewicht: ca. 0.9 kg (A)  
ca. 2.4 kg (S)

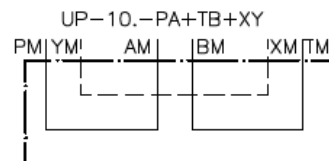
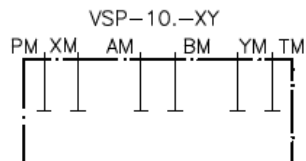
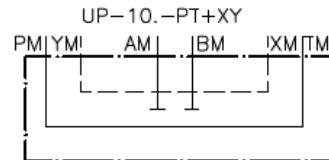
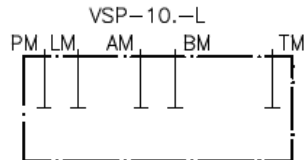
Nenndruck: 250 bar (A)  
350 bar (S)



VSP-10.-L  
VSP-10.-XY

UP-10.-PT+XY  
UP-10.-PA+TB+XY

Symbol:



Zum Lieferumfang gehoeren: 5 Stck. O-Ring 12.42 x 1.78  
2 Stck. O-Ring 9.25 x 1.78 (nur Ausfuehrung XY)  
1 Stck. O-Ring 6.07 x 1.78 (nur Ausfuehrung L)

Hinweis:

Erforderliche Befestigungsschrauben: 4 Stck. M6 x 30 DIN 912 (VSP-10.-...)  
4 Stck. M6 x 50 DIN 912 (UP-10.-...)