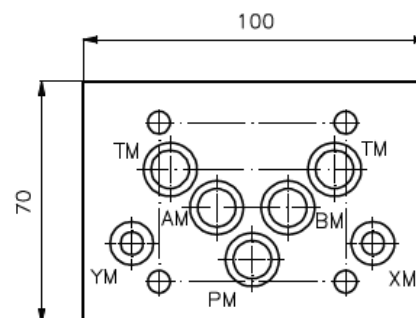
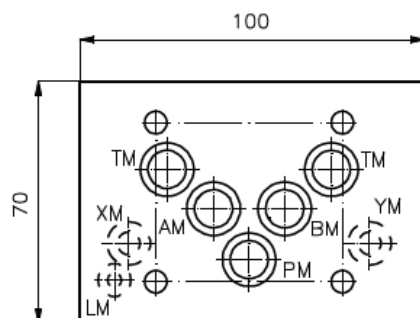
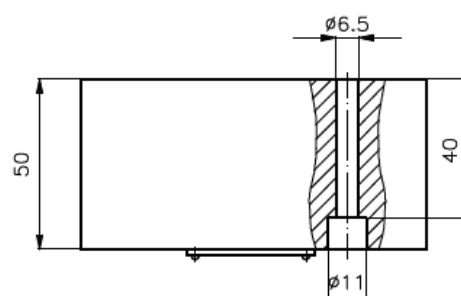
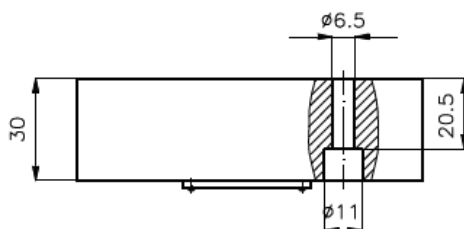
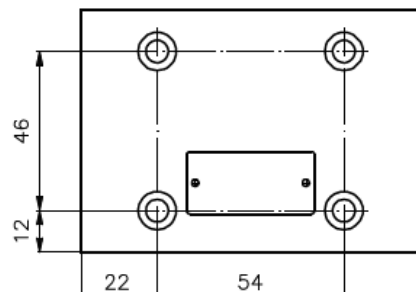
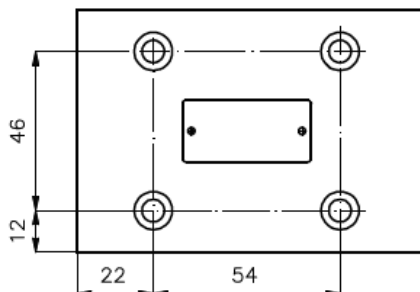


# Verschluss-Platte NG 10 (P, T, A, B, X und Y verschlossen)

VSP-10.-XY

**Gewicht:** ca. 0.9 kg (A)  
ca. 2.4 kg (S)

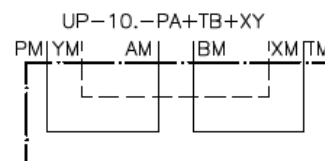
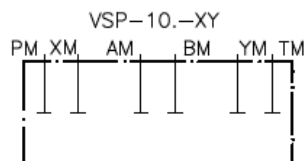
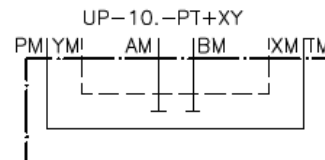
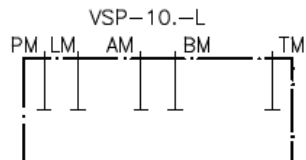
**Nenndruck:** 250 bar (A)  
350 bar (S)



VSP-10.-L  
VSP-10.-XY

UP-10.-PT+XY  
UP-10.-PA+TB+XY

**Symbol:**



**Zum Lieferumfang gehoeren:** 5 Stck. O-Ring 12.42 x 1.78  
2 Stck. O-Ring 9.25 x 1.78 (nur Ausfuehrung XY)  
1 Stck. O-Ring 6.07 x 1.78 (nur Ausfuehrung L)

**Hinweis:**

Erforderliche Befestigungsschrauben: 4 Stck. M6 x 30 DIN 912 (VSP-10.-...)  
4 Stck. M6 x 50 DIN 912 (UP-10.-...)