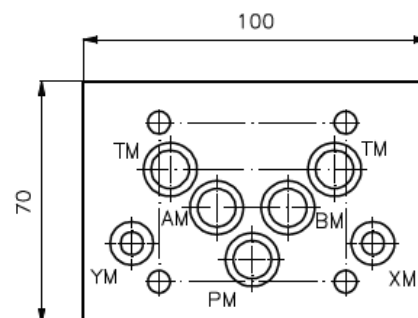
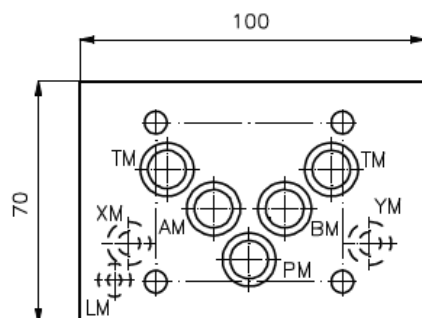
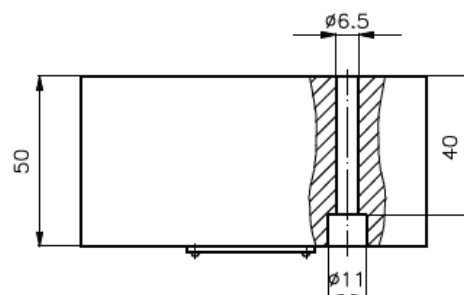
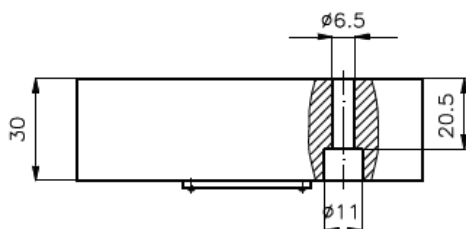
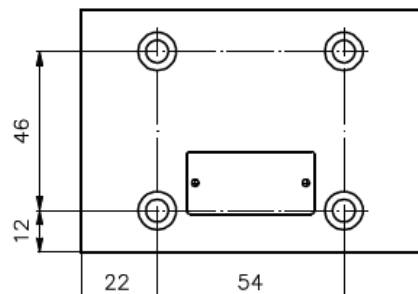
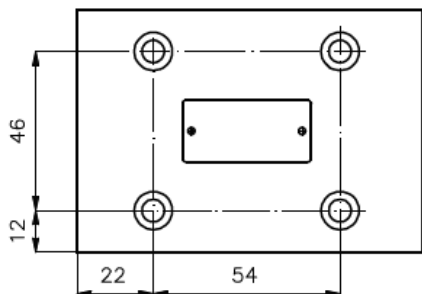


Verschluss-Platte NG 10 (P, T, A, B und L verschlossen)

VSP-10.-L

Gewicht: ca. 0.9 kg (A)
ca. 2.4 kg (S)

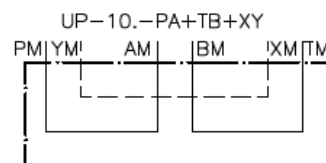
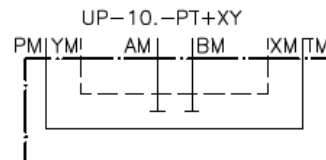
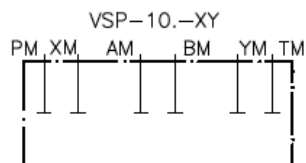
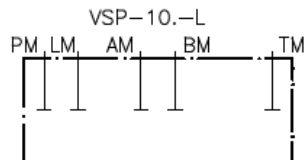
Nenndruck: 250 bar (A)
350 bar (S)



VSP-10.-L
VSP-10.-XY

UP-10.-PT+XY
UP-10.-PA+TB+XY

Symbol:



Zum Lieferumfang gehoeren: 5 Stck. O-Ring 12.42 x 1.78
2 Stck. O-Ring 9.25 x 1.78 (nur Ausfuehrung XY)
1 Stck. O-Ring 6.07 x 1.78 (nur Ausfuehrung L)

Hinweis:

Erforderliche Befestigungsschrauben: 4 Stck. M6 x 30 DIN 912 (VSP-10.-...)
4 Stck. M6 x 50 DIN 912 (UP-10.-...)