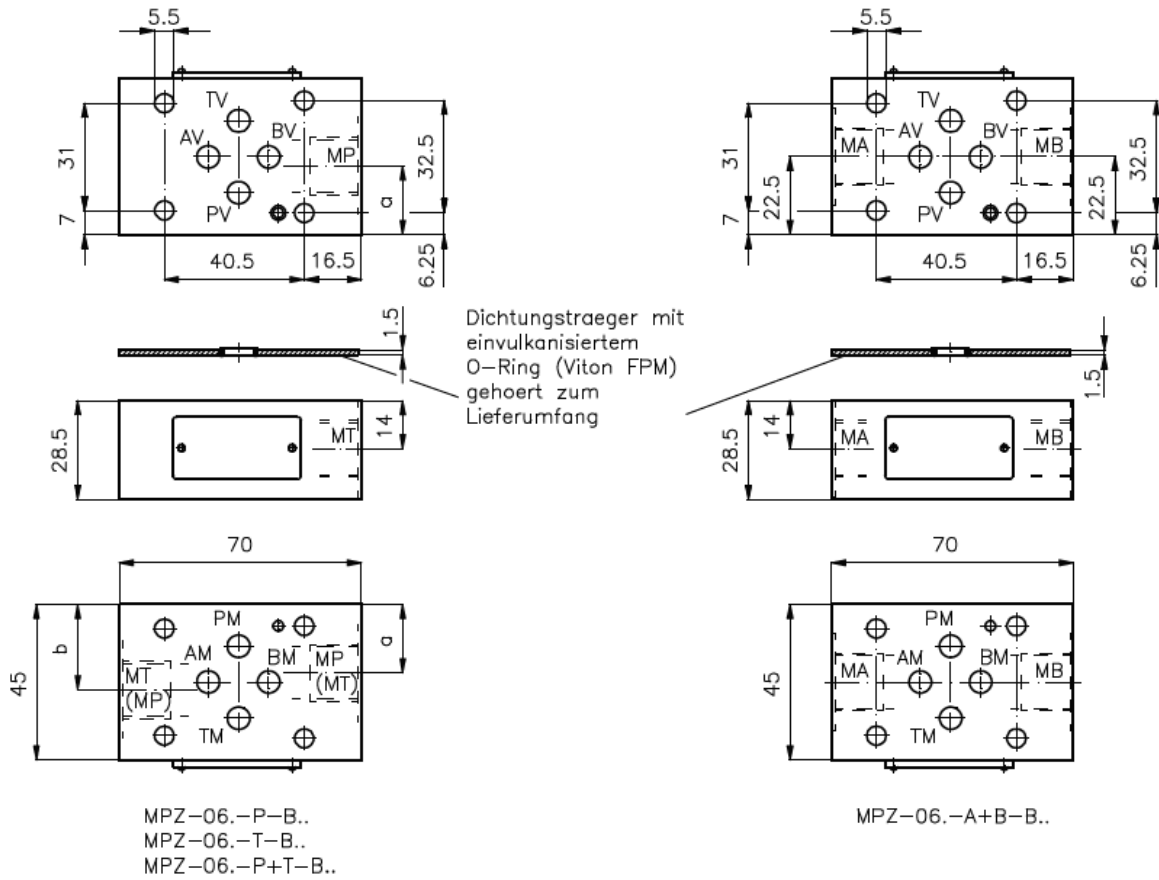


**Mess-Anschluss-Platte NG 6**  
mit Lochbild nach DIN 24340, Form A - Zwischenplattenbauweise

MPZ-06.-..

Gewicht: ca. 0.3 kg (A)  
ca. 0.7 kg (S)

Nenndruck: 250 bar (A)  
350 bar (S)

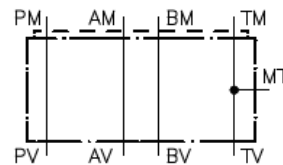
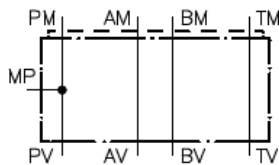


Typ	a	b
MPZ-06.-P(T)-B02	18.10	
MPZ-06.-P(T)-B03	19.85	
MPZ-06.-P+T-B02	18.10	26.50
MPZ-06.-P+T-B03	19.85	24.75

Symbol:

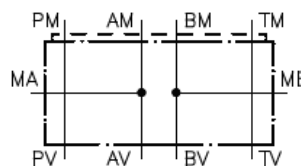
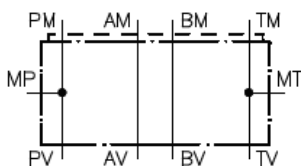
MPZ-06.-P-B02 (G 1/4")  
MPZ-06.-P-B03 (G 3/8")

MPZ-06.-T-B02 (G 1/4")  
MPZ-06.-T-B03 (G 3/8")



MPZ-06.-P+T-B02 (G 1/4")  
MPZ-06.-P+T-B03 (G 3/8")

MPZ-06.-A+B-B02 (G 1/4")  
MPZ-06.-A+B-B03 (G 3/8")



Hinweis:

Durch Drehen der Messplatte MPZ-06.-P-B.. um die Laengsachse erhaelt man die T-Ausfuhrung.