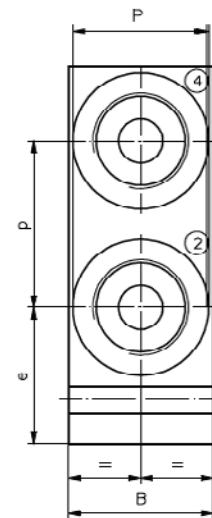
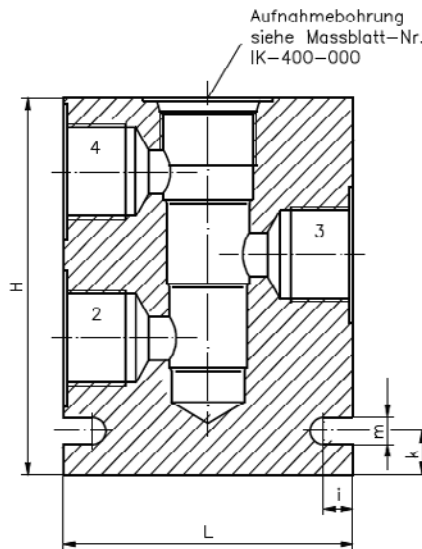
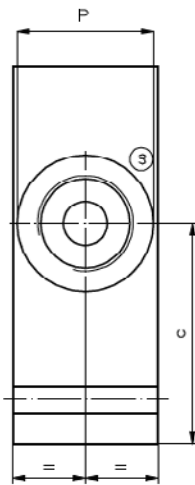


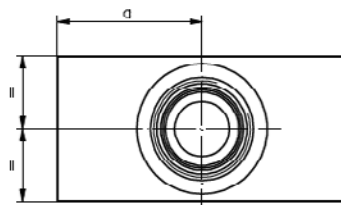
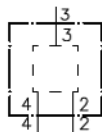
4LHS-...-B..

Gewicht: s. Tabelle

Nennndruck: 250 bar (A)
350 bar (S)



Symbol:



Planspiegel Anschlussgewinde	
Gewinde	P
B02	ø25
B03	ø28
B04	ø34
B06	ø42
B08	ø47

Typ	L	B	H	a	c	e	i	k	m	p	Gewicht (kg)	
											A	S
4LHS-10.-B..	70	40	80	35	45.5	29.5	10	10	7	32.5	0.40	1.00
4LHS-10.-B02/B03	70	40	80	35	45.5	29.5	10	10	7	32.5	0.40	1.00
4LHS-16.-B..	100	60	130	50	76	47	10	15	9	57.5	1.10	2.80
4LHS-16.-B06/B08	100	60	130	50	76	47	10	15	9	57.5	1.10	2.80

Bestell-Schlüssel:

Bestell-Beispiel:

4LHS-10A-B03

4-Wege-Ventil-Gehäuse
(für Stromteiler/
Stromvereiner)

Baugröße
Serie 10
Serie 16

Werkstoff
A = AlCuMgPb
S = GGG-40 bzw.
9SMn28K

Anschluss-Gewindegröße 2; 3; 4

Serie 10 B02 = G 1/4"
B03 = G 3/8"
B02/B03 = G 1/4" (Anschluss 2+4)
G 3/8" (Anschluss 3)
B04 = G 1/2"

Serie 16 B06 = G 3/4"
B08 = G 1"
B06/B08 = G 3/4" (Anschluss 2+4)
G 1" (Anschluss 3)