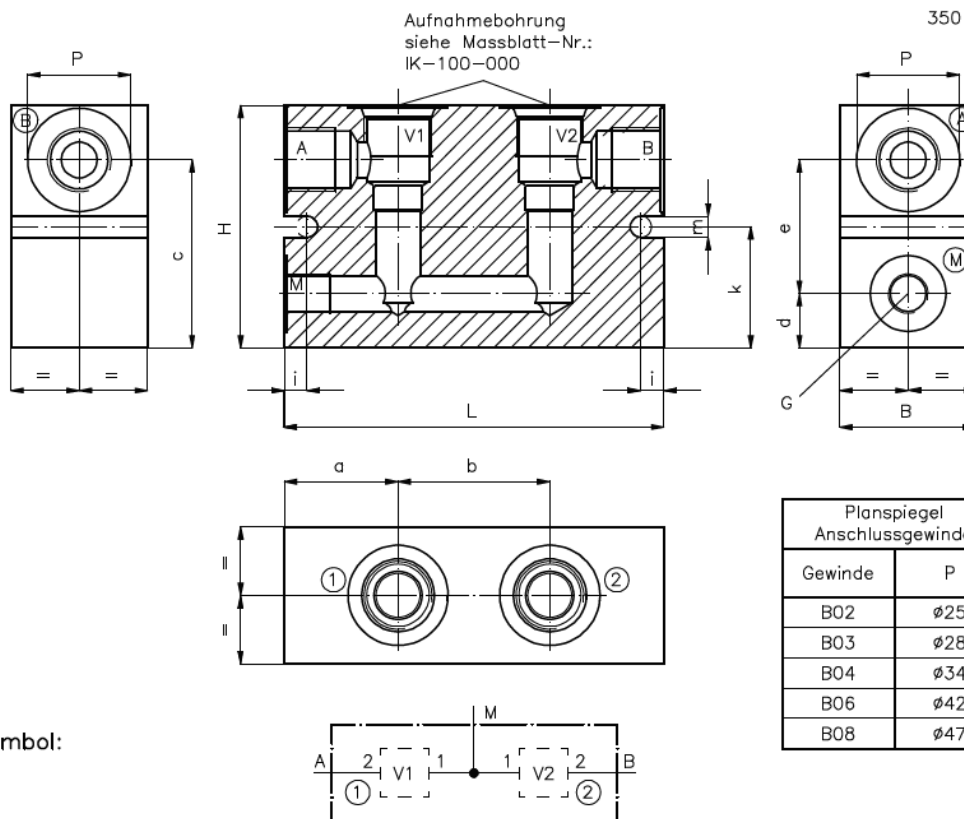


2-Wege-Doppel-Ventil-Gehäuse (in Reihenschaltung)

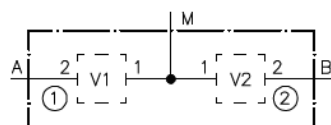
2LHD-...-B..

Gewicht: s. Tabelle

Nenndruck: 250 bar (A)
350 bar (S)



Symbol:



Typ	L	B	H	a	b	c	d	e	i	k	m	G	Gewicht (kg)	
													A	S
2LHD-08.-B..	100	35	60	32.5	35	45	14	31	10	28	ø7	G 1/4"	0.6	1.5
2LHD-10.-B..	125	40	80	37.5	50	62	18	44	7.5	40		G 1/4"	1.2	3.2
2LHD-12.-B..	150	48	100	50	50	72	18	54	10	40		G 3/8"	1.8	5.1
2LHD-16.-B..	170	60	100	50	70	74.5	20	54.5	7.5	45	ø9	G 1/2"	2.6	7.2
2LHD-20.-B..														

Bestell-Schlüssel:

Bestell-Beispiel:

2LHD-10A-B04

2-Wege-Ventil-Gehäuse

Anschluss-Gewindegrösse A; B

Baugrösse

- Serie 08
- Serie 10
- Serie 12
- Serie 16
- Serie 20

Serie 08 B02 = G 1/4"
B03 = G 3/8"

Serie 16 B06 = G 3/4"
B08 = G 1"

Serie 10 B02 = G 1/4"
B03 = G 3/8"
B04 = G 1/2"

Serie 12 B04 = G 1/2"
B06 = G 3/4"
B08 = G 1"

Werkstoff

- A = AlCuMgPb
- S = GGG-40 bzw.
9SMn28K