

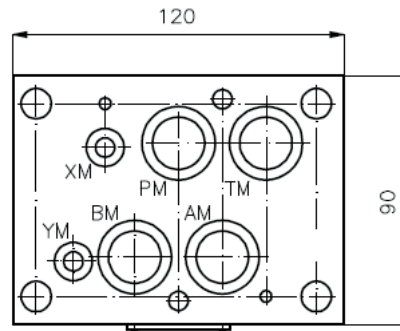
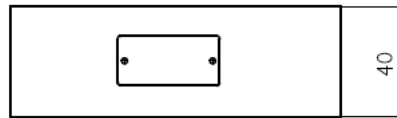
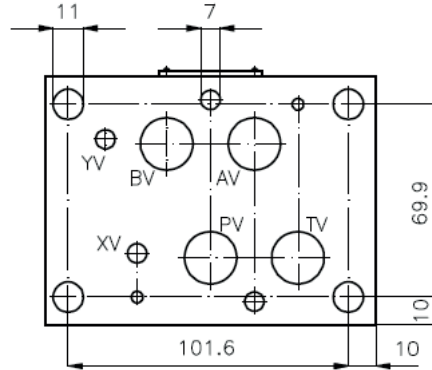
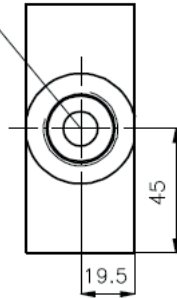
# Mehrzweck-Gehäuse-Zwischenplatte NG 16 (von P1 nach T2)

MGZ-16.-P1/T2/12-04

**Gewicht:** ca. 1.1 kg (A)  
ca. 3.0 kg (S)

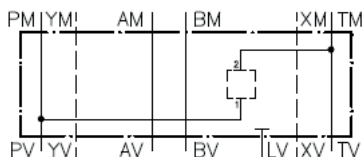
**Nenndruck:** 250 bar (A)  
350 bar (S)

Aufnahmebohrung  
C-12-2  
siehe Massblatt-Nr.:  
IK-100-129

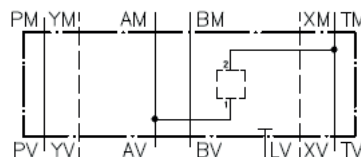


## Symbol:

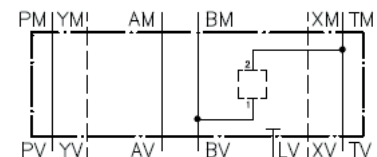
MGZ-16.-P1/T2/12



MGZ-16.-A1/T2/12



MGZ-16.-B1/T2/12



## Bestell-Schlüssel:

### Bestell-Beispiel:

**MGZ-16A-P1/T2/12**

Geraeteausfuehrung \_\_\_\_\_ Aufnahmebohrung  
Baugroesse und Werkstoff \_\_\_\_\_ Serie 12  
16A = Alu (F 37) \_\_\_\_\_ Ausfuehrung  
16S = Stahl (9SMnPb28K bzw. GGG-40)

**Zum Lieferumfang gehoeren:** 4 Stck. O-Ring 22.22 x 2.62  
2 Stck. O-Ring 9.19 x 2.62