

counterbalance valve CETOP 7 ((sandwich plate) in A)

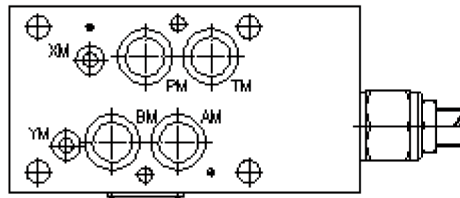
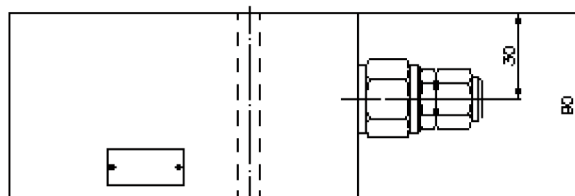
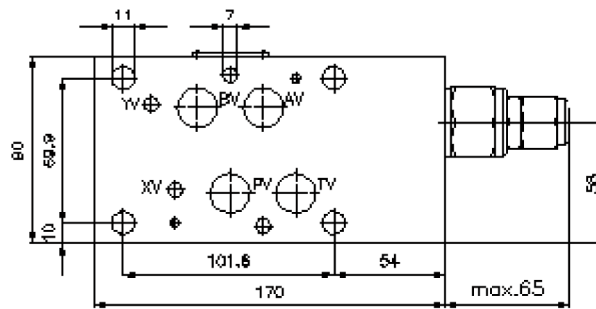
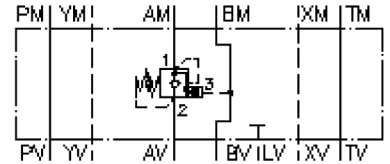
SBLZ-16.-AP.C/..



Motrac Hydraulik GmbH
Siemensring 87 - D-47877 Willich
fon +49-(0)2154-8162.0 - fax +49-(0)2154-8162.499
e-mail info.miw@motracindustries.com
internet www.motracindustries.com

IZ-530-550-00

(subject to change)



counterbalance valve CETOP 7 ((sandwich plate) in A)

SBLZ-16.-AP.C/..

IZ-530-550-00

(subject to change)



Ordering example:

SBLZ - 16A - A PA C / 30
| | | | |
A **B** **C** **D** **E** **F**

Model code:

- | | |
|---|--|
| <p>A design
counter balance valve
with mounting interface DIN 24340 form A
sandwichplate design</p> <p>B size and material
16A = aluminum (F37)
16S = steel (9SMnPb28K resp. GGG-40)</p> <p>C function mode
A = in A acting</p> <p>D counter balance valve (pilot ratio 4:1)
PA = CBPA-12.-.. (without seals at the piston)
PS = CBPS-12.-.. (with seals at the piston)</p> | <p>E adjustment
C = cap
S = screw adjustment</p> <p>F pressure range (CBPA, CBPS)
15 = 6.9 - 105 bar
30 = 20.7 - 210 bar
40 = 41.4 - 276 bar</p> |
|---|--|

Technical Data:

nominal pressure:	250 bar (A) 275 bar (S)
nominal flow:	135 l/min
weight:	3.7 kg
counter balance valve:	CBP.-12.-.. see datasheet no. CC-410-121-00
included:	4 pcs. O-Ring 22.22 x 2.62 2 pcs. O-Ring 9.19 x 2.62