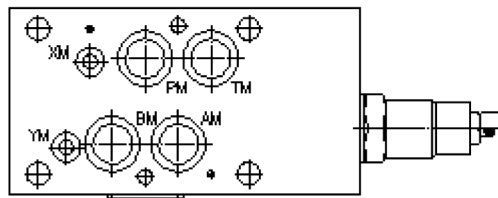
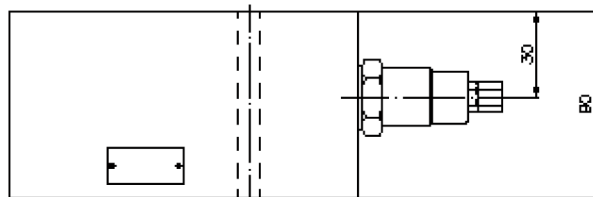
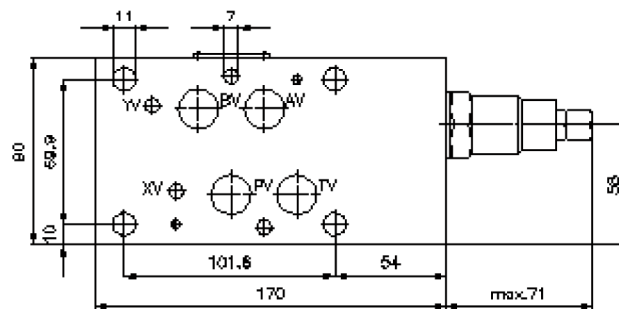
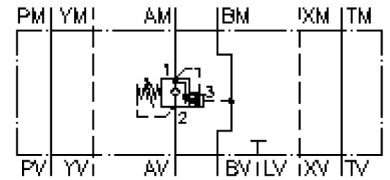


# counterbalance valve CETOP 7 ((sandwich plate) in A)

SBLZ-16.-A..CA/..

IZ-530-500-00

(subject to change)



# counterbalance valve CETOP 7 ((sandwich plate) in A)

SBLZ-16.-A..CA/..



Motrac Hydraulik GmbH  
Siemensring 87 - D-47877 Willich  
fon +49-(0)2154-8162.0 - fax +49-(0)2154-8162.499  
e-mail info.miw@motracindustries.com  
internet www.motracindustries.com

IZ-530-500-00

(subject to change)

## Ordering example:

SBLZ - 16A - A 01 C A / 50  
| | | | | | |  
**A** **B** **C** **D** **E** **F** **G**

## Model code:

- |  |  |
|--|--|
| <p><b>A design</b><br/>counter balance valve<br/>with mounting interface DIN 24340 form A<br/>sandwichplate design</p> <p><b>B size and material</b><br/>16A = aluminum (F37)<br/>16S = steel (9SMnPb28K resp. GGG-40)<br/>(on request)</p> <p><b>C function mode</b><br/>A = in A acting (return)</p> | <p><b>D counter balance valve</b><br/>01 = CBV1-12.-.. (pilot ratio 4:1)<br/>02 = CBV2-12.-.. (pilot ratio 10:1)</p> <p><b>E adjustment</b><br/>C = cap</p> <p><b>F check valve free flow crack pressure</b><br/>A = 2.0 bar (standart)<br/>B = 0.30 bar</p> <p><b>G pressure range (CBV1 + CBV2)</b><br/>30 = 62.0 - 210 bar<br/>50 = 186.0 - 350 bar</p> |
|--|--|

## Technical Data:

- note:** left turn (counter clockwise) = increasing pressure  
right turn (clockwise) = reducing pressure
- nominal pressure:** 250 bar (A)  
higher pressure on request
- nominal flow:** 114 l/min
- weight:** 3.7 kg (A/S)
- counter balance valve:** CBV1-12.-.. resp. CBV2-12.-.. see datasheet no. [MC-410-121-00](#)
- included:** 4 pcs. O-Ring 22.22 x 2.62  
2 pcs. O-Ring 9.19 x 2.62