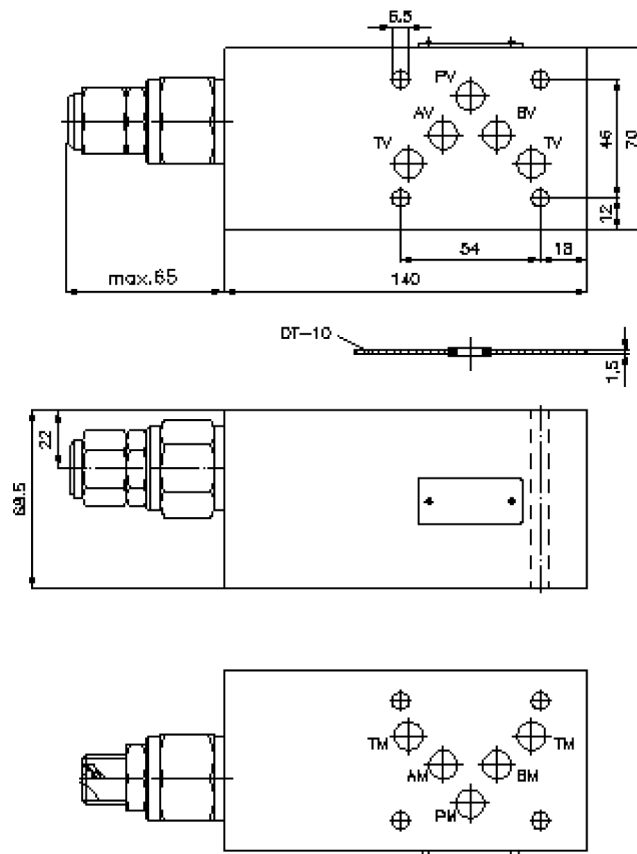
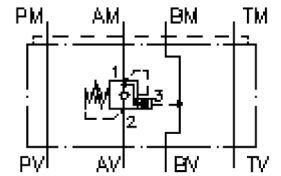


# counterbalance valve CETOP 5 ((sandwich plate) in A)

SBLZ-10.-AP.C/..

IZ-530-450-00

(subject to change)



# counterbalance valve CETOP 5 ((sandwich plate) in A)

SBLZ-10.-AP.C/..



Motrac Hydraulik GmbH  
Siemensring 87 - D-47877 Willich  
fon +49-(0)2154-8162.0 - fax +49-(0)2154-8162.499  
e-mail info.miw@motracindustries.com  
internet www.motracindustries.com

IZ-530-450-00

(subject to change)



## Ordering example:

SBLZ - 10A - A PA C / 30  
| | | | |  
**A** **B** **C** **D** **E** **F**

## Model code:

- |  |  |
|--|--|
| <p><b>A</b> <b>design</b><br/>counter balance valve<br/>with mounting interface DIN 24340 form A<br/>sandwichplate design</p> <p><b>B</b> <b>size and material</b><br/>10A = aluminum (F37)<br/>10S = steel (9SMnPb28K resp. GGG-40)</p> <p><b>C</b> <b>function mode</b><br/>A = in A acting (return)</p> <p><b>D</b> <b>counter balance valve (pilot ratio 4:1)</b><br/>PA = CBPA-12.-.. (without seals at the piston)<br/>PS = CBPS-12.-.. (with seals at the piston)</p> | <p><b>E</b> <b>adjustment</b><br/>C = cap<br/>S = screw adjustment</p> <p><b>F</b> <b>pressure range (CBPA, CBPS)</b><br/>15 = 7.0 - 105 bar<br/>30 = 21.0 - 210 bar<br/>40 = 41.4 - 276 bar</p> |
|--|--|

## Technical Data:

- nominal pressure:** 250 bar (A)  
275 bar (S)
- nominal flow:** 120 l/min
- weight:** 2.1 / 4.4 kg (A/S)
- counter balance valve:** CBP.-12.-.. see datasheet no. [CC-410-121-00](#)
- included:** DT-10 = sealing plate with vulcanized O-ring (Viton FPM)