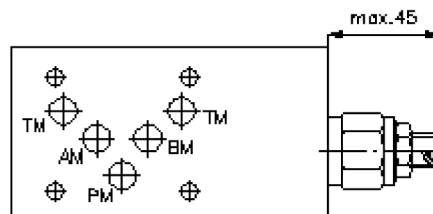
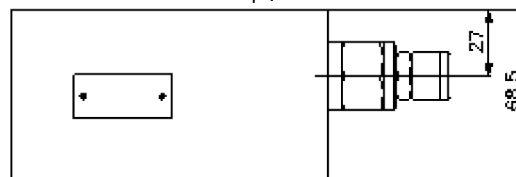
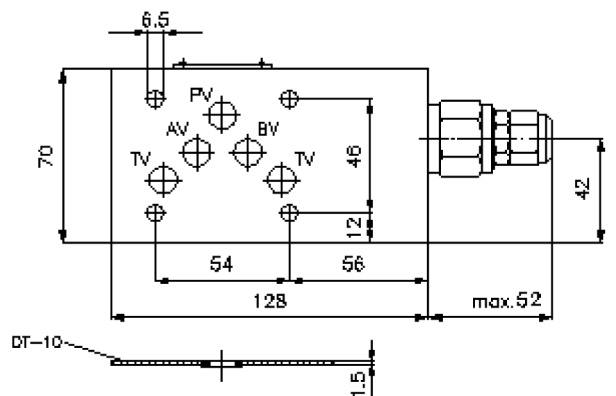
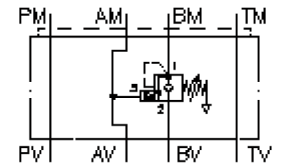


counterbalance valve CETOP 5 ((sandwich plate) in B (vented spring))

CBZ-10.-BPGC/..



counterbalance valve CETOP 5 ((sandwich plate) in B (vented spring))

CBZ-10.-BPGC/..



Motrac Hydraulik GmbH
Siemensring 87 - D-47877 Willich
fon +49-(0)2154-8162.0 - fax +49-(0)2154-8162.499
e-mail info.miw@motracindustries.com
internet www.motracindustries.com

IZ-525-454-00

(subject to change)



Ordering example:

CBZ - 10A - B PG C / 50
| | | | | |
A **B** **C** **D** **E** **F**

Model code:

- | | |
|---|--|
| <p>A design
counter balance valve
with mounting interface DIN 24340 form A
sandwichplate design</p> <p>B size and material
10A = aluminum (F37)
10S = steel (9SMnPb28K resp. GGG-40)</p> <p>C function mode
B = in B acting (return flow)</p> | <p>D counter balance valve (pilot ratio 4:1)
PG = CBPG-10.-.. (vented spring)</p> <p>E adjustment
C = cap
S = screw adjustment</p> <p>F pressure range (CBPG)
15 = 7.0 - 105 bar
30 = 21.0 - 210 bar
50 = 35.0 - 350 bar</p> |
|---|--|

Technical Data:

- nominal pressure:** 250 bar (A)
350 bar (S)
- nominal flow:** 60 l/min
- weight:** 1.8 / 3.8 kg (A/S)
- counter balance valve:** CBPG-10.-.. see datasheet no. [CC-420-101-00](#)
- included:** DT-10 = sealing plate with vulcanized O-ring (Viton FPM)