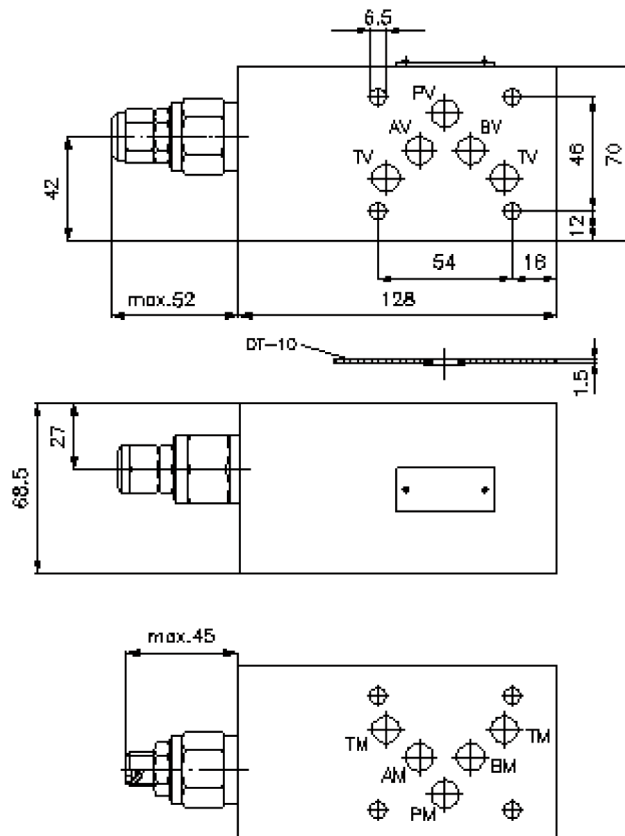
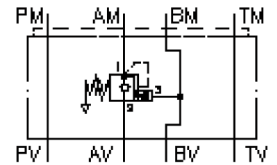


counterbalance valve CETOP 5 ((sandwich plate) in A (vented spring))

CBZ-10.-APGC/..

IZ-525-453-00

(subject to change)



counterbalance valve CETOP 5 ((sandwich plate) in A (vented spring))

CBZ-10.-APGC/..



Motrac Hydraulik GmbH
Siemensring 87 - D-47877 Willich
fon +49-(0)2154-8162.0 - fax +49-(0)2154-8162.499
e-mail info.miw@motracindustries.com
internet www.motracindustries.com

IZ-525-453-00

(subject to change)



Ordering example:

SBLZ - 10A - A PG C / 30
| | | | | |
A **B** **C** **D** **E** **F**

Model code:

- | | |
|---|---|
| A design
counter balance valve
with mounting interface DIN 24340 form A
sandwichplate design | D counter balance valve (pilot ratio 4:1)
PG = CBPG-12.-.. (vented spring) |
| B size and material
10A = aluminum (F37)
10S = steel (9SMnPb28K resp. GGG-40) | E adjustment
C = cap
S = screw adjustment |
| C function mode
A = in A acting (return) | F pressure range (CBPG)
15 = 7.0 - 105 bar
30 = 21.0 - 210 bar
40 = 41.4 - 276 bar |

Technical Data:

- nominal pressure:** 250 bar (A)
275 bar (S)
- nominal flow:** 120 l/min
- weight:** 2.1 / 4.4 kg (A/S)
- counter balance valve:** CBPG-12.-.. see datasheet no. [CC-420-121-00](#)
- included:** DT-10 = sealing plate with vulcanized O-ring (Viton FPM)