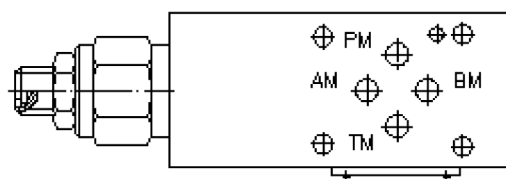
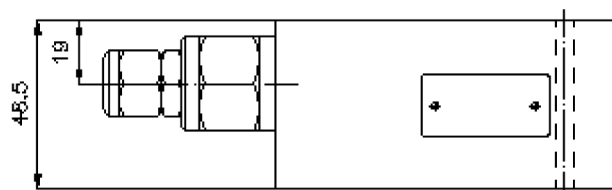
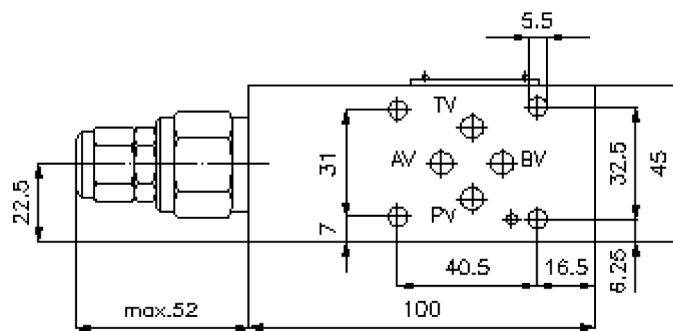
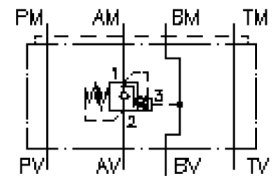


counterbalance valve CETOP 3 ((sandwich plate) in A)

SBLZ-06.-AP.C/..

IZ-520-250-00

(subject to change)



counterbalance valve CETOP 3 ((sandwich plate) in A)

SBLZ-06.-AP.C/..

IZ-520-250-00

(subject to change)



Ordering example:

SBLZ - 06A - A PA C / 50

A	B	C	D	E	F

Model code:

- | | |
|---|--|
| <p>A design
counter balance valve
with mounting interface DIN 24340 form A
sandwichplate design</p> <p>B size and material
06A = aluminum (F37)
06S = steel (9SMnPb28K resp. GGG-40)</p> <p>C function mode
A = in A acting</p> <p>D counter balance valve (pilot ratio 4:1)
PA = CBPA-10.-.. (without seals at the piston)
PS = CBPS-10.-.. (with seals at the piston)</p> | <p>E adjustment
C = cap
S = screw adjustment</p> <p>F pressure range (CBPA, CBPS)
15 = 7.0 - 105 bar
30 = 21.0 - 210 bar
50 = 35.0 - 350 bar</p> |
|---|--|

Technical Data:

- nominal pressure:** 350 bar (S)
250 bar (A)
- nominal flow:** 60 l/min
- weight:** 0.9 / 2. 2 kg (A/S)
- counter balance valve:** CBP.-10.-.. see datasheet no. [CC-410-101-00](#)
- included:** DT-06 = sealing plate with vulcanized O-ring (Viton FPM)