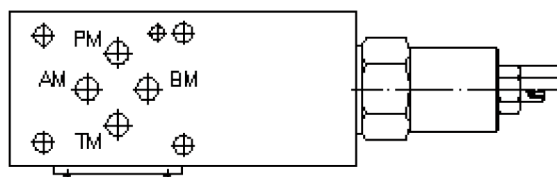
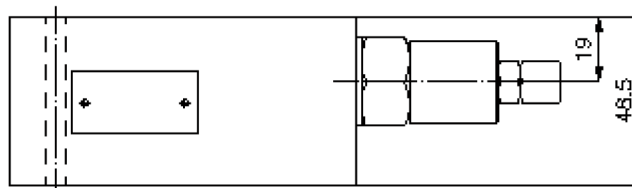
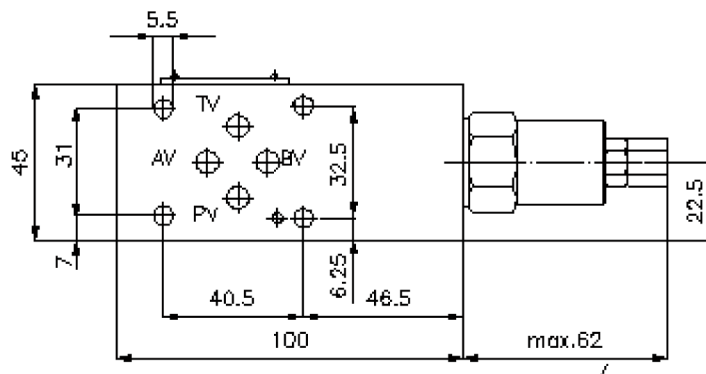
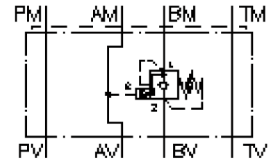


counterbalance valve CETOP 3 ((sandwich plate) in B)

SBLZ-06.-B..CA/..

IZ-520-201-00

(subject to change)



counterbalance valve CETOP 3 ((sandwich plate) in B)

SBLZ-06.-B..CA/..



Motrac Hydraulik GmbH
Siemensring 87 - D-47877 Willich
fon +49-(0)2154-8162.0 - fax +49-(0)2154-8162.499
e-mail info.miw@motracindustries.com
internet www.motracindustries.com

IZ-520-201-00

(subject to change)



Ordering example:

SBLZ - 06A - B 01 C A / 50
| | | | | | |
A **B** **C** **D** **E** **F** **G**

Model code:

- | | |
|---|--|
| <p>A design
counter balance valve
with mounting interface DIN 24340 form A
sandwichplate design</p> <p>B size and material
06A = aluminum (F37)
06S = steel (9SMnPb28K resp. GGG-40)</p> <p>C function mode
B = in B acting</p> | <p>D counter balance valve
01 = CBV1-10.-.. (pilot ratio 4:1)
02 = CBV2-10.-.. (pilot ratio 10:1)</p> <p>E adjustment
C = cap</p> <p>F check valve free flow crack pressure
A = 1.4 bar</p> <p>G pressure range (CBV1 + CBV2)
30 = 62.0 - 210 bar
50 = 186.0 - 350 bar</p> |
|---|--|

Technical Data:

- note:** left turn (counter clockwise) = increasing pressure
right turn (clockwise) = reducing pressure
- nominal pressure:** 350 bar (S)
250 bar (A)
- nominal flow:** 60 l/min
- weight:** 0.9 / 2.2 kg (A/S)
- counter balance valve:** CBV1-10.-.. resp. CBV2-10.-.. see datasheet no. [MC-410-101-00](#)
- included:** DT-06 = sealing plate with vulcanized O-ring (Viton FPM)