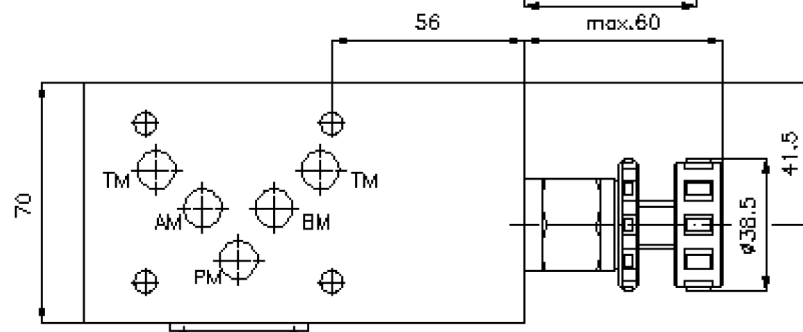
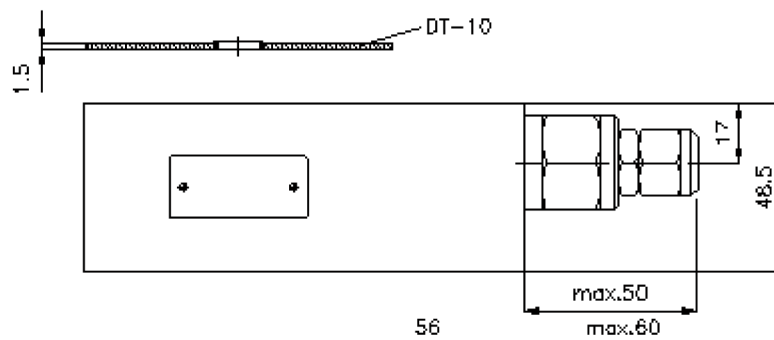
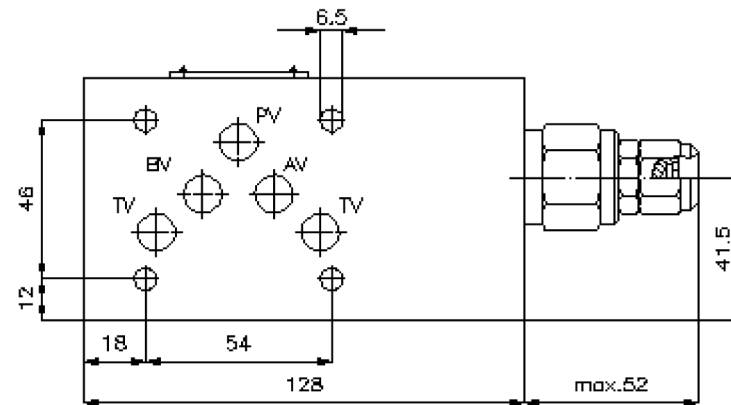
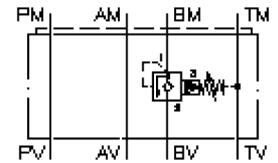


pressure sequence valve CETOP 5 ((sandwich plate) in B, pilot operated) DFVZ-10.-BVP/..

IZ-450-451-00

(subject to change)



pressure sequence valve CETOP 5 ((sandwich plate) in B, pilot operated)

DFVZ-10.-BVP./..



Motrac Hydraulik GmbH
Siemensring 87 - D-47877 Willich
fon +49-(0)2154-8162.0 - fax +49-(0)2154-8162.499
e-mail info.miw@motracindustries.com
internet www.motracindustries.com

IZ-450-451-00

(subject to change)



Ordering example:

DFVZ - 10A - B VP C / 30
| | | | | |
A **B** **C** **D** **E** **F**

Model code:

- | | |
|---|--|
| <p>A design
pressure-sequence-valve
with mounting interface DIN 24340 form A
sandwichplate design</p> <p>B size and material
10A = aluminum (F37)</p> <p>C function mode
B = in B acting (return flow)</p> <p>D pressure sequence valve
VP = PSVP-10.-.. (pilot operated) see data
sheet no.: CP-315-101-00</p> | <p>E adjustment
C = cap
K = handknob</p> <p>F pressure range (PSVP)
15 = 3.4 - 105 bar
30 = 3.4 - 210 bar
50 = 3.4 - 350 bar</p> |
|---|--|

Technical Data:

note:

Concerning the flow direction (return and supply) it is important to review the mounting position (port "1" and "2"). Rotating around the lateral axis the flow direction of all variants will change: e.g. from port "1" to port "2" will change to port "2" to port "1", or vice versa, and the channel A will change to B and B to A (see symbol).

nominal pressure:

250 bar (A)
350 bar (S)

nominal flow:

60 l/min

weight:

1.8 / 3.8 kg (A/S)

included:

DT-10 = sealing plate with vulcanized O-ring (Viton FPM)