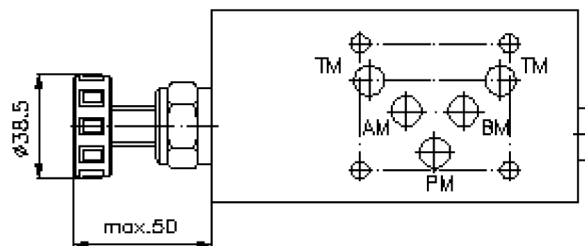
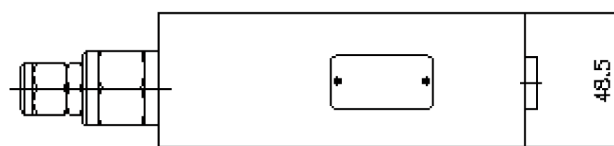
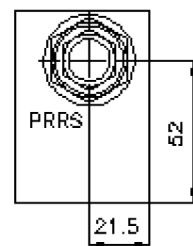
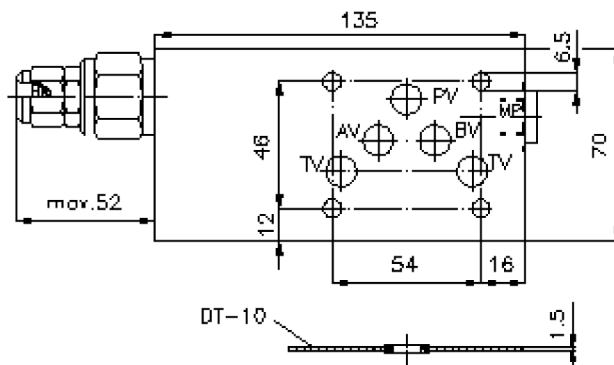
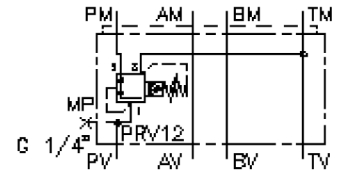


3-way pressure reducing valve CETOP 5 ((sandwich plate) in P, pilot operated)

DMVZ-10.-P12./12-..

IZ-435-400-00

(subject to change)



3-way pressure reducing valve CETOP 5 ((sandwich plate) in P, pilot operated)

DMVZ-10.-P12./12-..



Motrac Hydraulik GmbH
Siemensring 87 - D-47877 Willich
fon +49-(0)2154-8162.0 - fax +49-(0)2154-8162.499
e-mail info.miw@motracindustries.com
internet www.motracindustries.com

IZ-435-400-00

(subject to change)



Ordering example:

DMVZ - 10A - P 12 C / 12 - 30
| | | | | | |
A **B** **C** **D** **E** **F** **G**

Model code:

- | | |
|---|--|
| <p>A design
pressure regulation valve
with mounting interface DIN 24340 form A
sandwichplate design</p> <p>B size and material
10A = aluminum (F37)
10S = steel (9SMnPb28K resp. GGG-40)</p> <p>C function mode
P = in P acting</p> <p>D pressure reducing valve
12 = PRV12-12.-.. (pilot operated) see
data sheet no.: MP-240-121-00</p> | <p>E adjustment
C = cap
K = handknob</p> <p>F size of screw-in valve
PRV12-12.</p> <p>G pressure range (PRV12)
15 = 10.0 - 100 bar
30 = 17.0 - 210 bar
50 = 24.0 - 350 bar</p> |
|---|--|

Technical Data:

- nominal pressure:** 250 bar (A)
350 bar (S)
- nominal flow:** 115 l/min
- weight:** 1.5 / 4.2 kg (A/S)
- included:** DT-10 = sealing plate with vulcanized O-ring (Viton FPM)