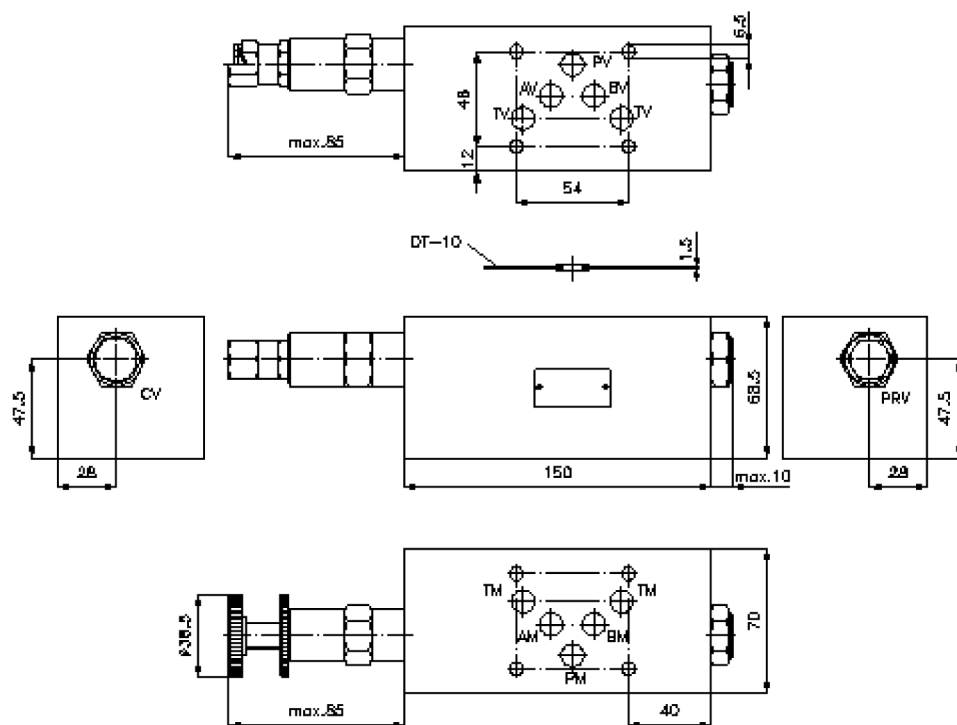
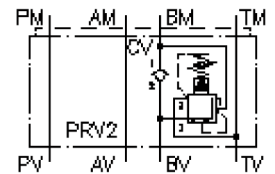


3-way pressure reducing valve CETOP 5 ((sandwich plate) in B, pilot operated) DMVZ-10.-B02./..

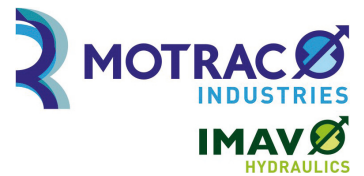
IZ-430-402-00

(subject to change)



3-way pressure reducing valve CETOP 5 ((sandwich plate) in B, pilot operated)

DMVZ-10.-B02./..



Motrac Hydraulik GmbH
Siemensring 87 - D-47877 Willich
fon +49-(0)2154-8162.0 - fax +49-(0)2154-8162.499
e-mail info.miw@motracindustries.com
internet www.motracindustries.com

IZ-430-402-00

(subject to change)



Ordering example:

DMVZ - 10A - B 02 C / 12
| | | | | |
A **B** **C** **D** **E** **F**

Model code:

- | | |
|--|---|
| <p>A design
pressure regulator valve
with mounting interface DIN 24340 form A
sandwichplate design</p> <p>B size and material
10A = aluminum (F37)
10S = steel (9SMnPb28K resp. GGG-40)</p> <p>C function mode
B = in B acting</p> | <p>D pressure reducing valve
02 = PRV2-10.-... (pilot operated) see data
sheet no.: <u>MP-210-101-00</u></p> <p>E adjustment
C = cap
K = handknob</p> <p>F pressure range (PRV2)
03 = 3.5 - 20 bar
20 = 7.0 - 140 bar
35 = 17.0 - 240 bar</p> |
|--|---|

Technical Data:

- nominal pressure:** 250 bar (A)
350 bar (S)
- nominal flow:** 40 l/min
- weight:** 2.2 / 5.6 kg (A/S)
- included:** DT-10 = sealing plate with vulcanized O-ring (Viton FPM)