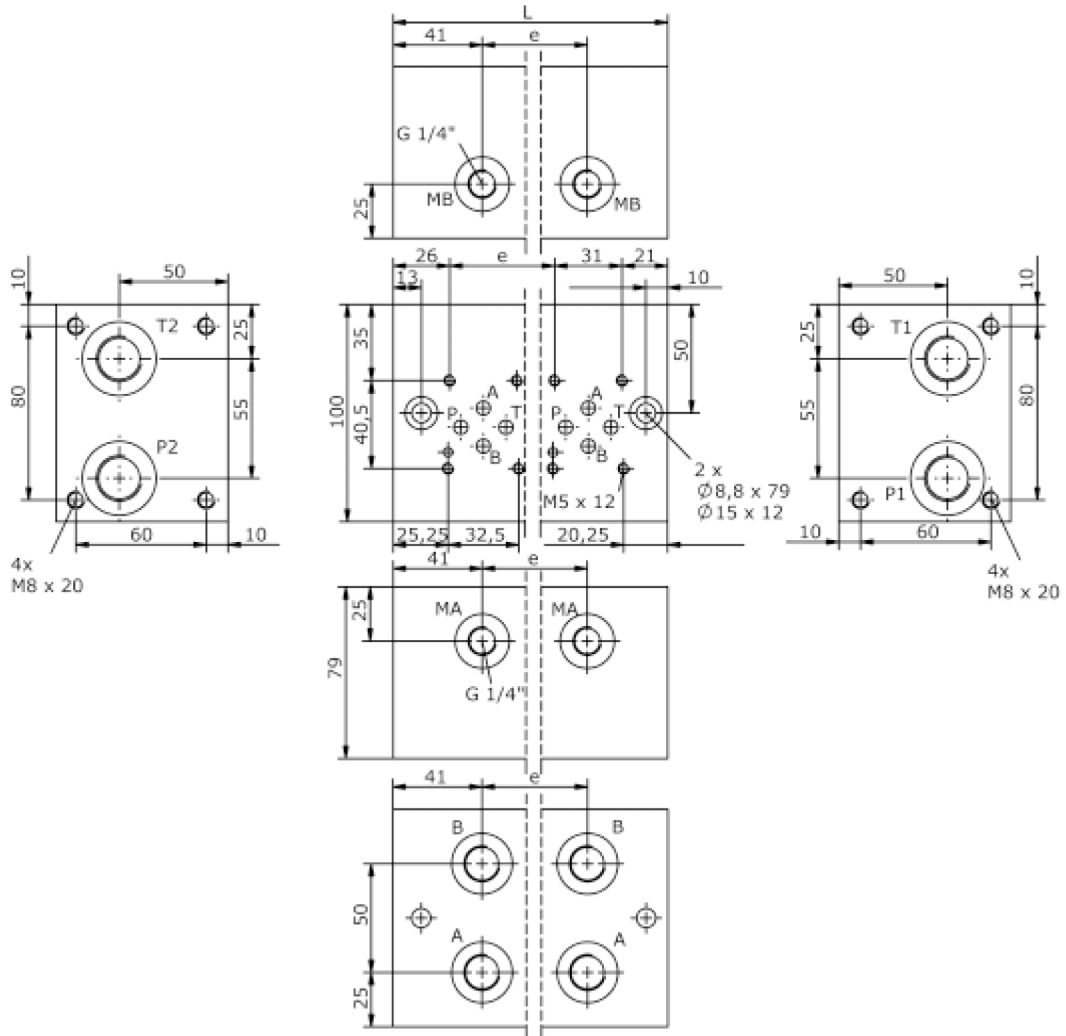
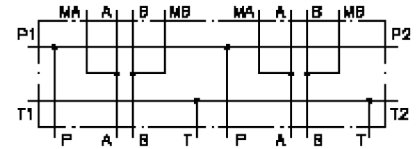


# single mounting plate, CETOP 3 (with cylinder and gauge port)

MSP-06.-S01-.-S-U-B04-B03

IM-210-110-00

(subject to change)



# single mounting plate, CETOP 3 (with cylinder and gauge port)

MSP-06.-S01-.-S-U-B04-B03



Motrac Hydraulik GmbH  
Siemensring 87 - D-47877 Willich  
fon +49-(0)2154-8162.0 - fax +49-(0)2154-8162.499  
e-mail info.miw@motracindustries.com  
internet www.motracindustries.com

IM-210-110-00

(subject to change)

## Ordering example:

MSP - 06A - S01 - 2 - S - U - B04 - B03

**A**   **B**   **C**   **D**   **E**   **F**   **G**   **H**

## Model code:

- |   |  |
|---|--|
| <b>A</b> <b>design</b><br>multi station mounting subplate   | <b>F</b> <b>port A and B at the bottom</b><br>port A and B at the bottom                   |
| <b>B</b> <b>size and material</b><br>06A = aluminum (F37)<br>06S = steel (9SMnPb28K resp. GGG-40) | <b>G</b> <b>port size P and T</b><br>B04 = BSPP 1/2"<br>B03 = BSPP 3/8"<br>B06 = BSPP 3/4" |
| <b>C</b> <b>special variant</b><br>special variant  | <b>H</b> <b>port size A and B</b><br>B04 = BSPP 1/2"<br>B06 = BSPP 3/4"                    |
| <b>D</b> <b>qty. of directional valves</b><br>number of directional valves                        |  |
| <b>E</b> <b>port P and T at the side</b><br>port P and T at the side                              |  |

## Technical Data:

**nominal pressure:** 250 bar (A)  
350 bar (S)

**weight:**