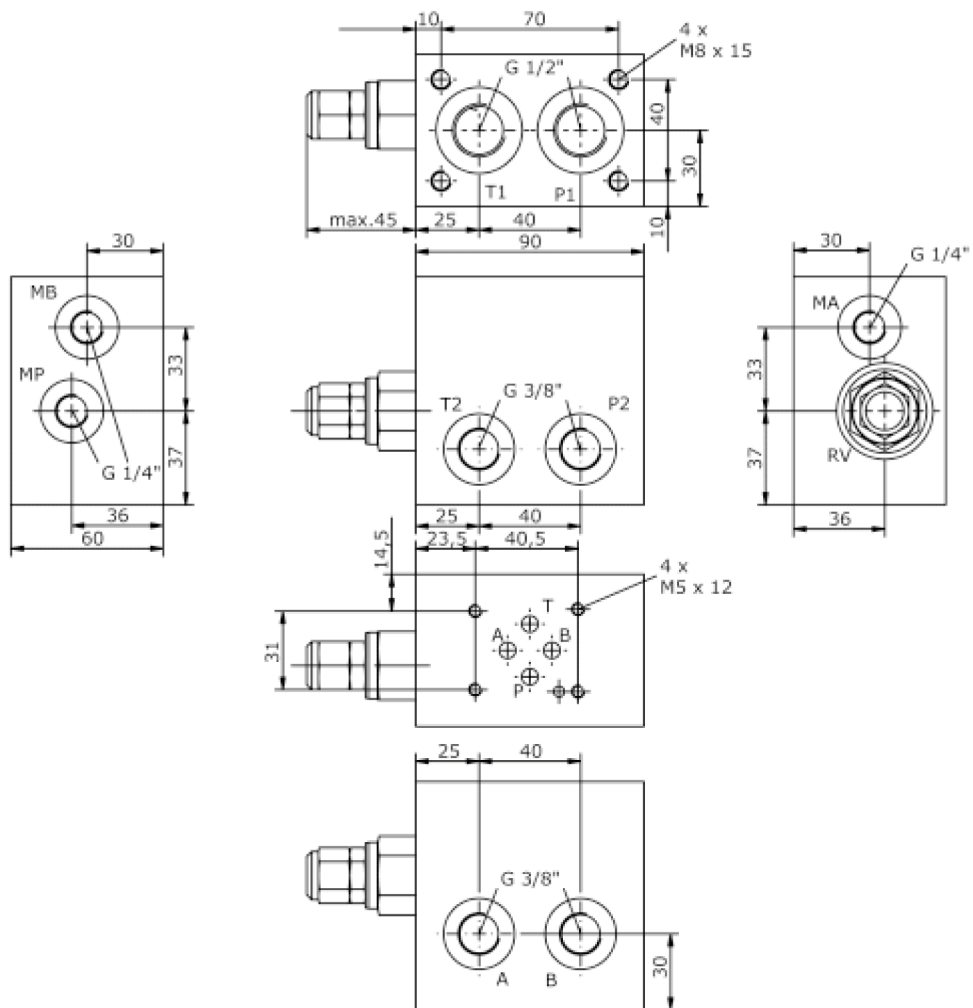
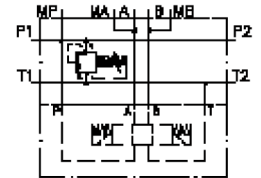


single mounting plate, CETOP 3 (with relief valve type PS.)

MEP-06.-DBV-PS./..

IM-120-102-00

(subject to change)



single mounting plate, CETOP 3 (with relief valve type PS.)

MEP-06.-DBV-PS./..



Motrac Hydraulik GmbH
Siemensring 87 - D-47877 Willich
fon +49-(0)2154-8162.0 - fax +49-(0)2154-8162.499
e-mail info.miw@motracindustries.com
internet www.motracindustries.com

IM-120-102-00

(subject to change)



Ordering example:

MEP - 06A - DBV - PS - C / 30
| | | | | |
A **B** **C** **D** **E** **F**

Model code:

- | | |
|--|---|
| A design
single mounting plate | F pressure range
RVPS-10.-..
15 = 3.4 - 105 bar
30 = 3.4 - 210 bar
50 = 3.4 - 350 bar |
| B size and material
06A = aluminum (F37)
06S = steel (9SMnPb28K resp. GGG-40) | |
| C relief valve
relief-valve | |
| D relief valve
PS = RVPS-10.-.. (pilot operated) see data
sheet no.: CP-110-101-00 | |
| E adjustment
C = cap
K = handknob | |

Technical Data:

nominal pressure: 250 bar (A)
350 bar (S)

weight: 1.3 / 3.5 kg (A/S)