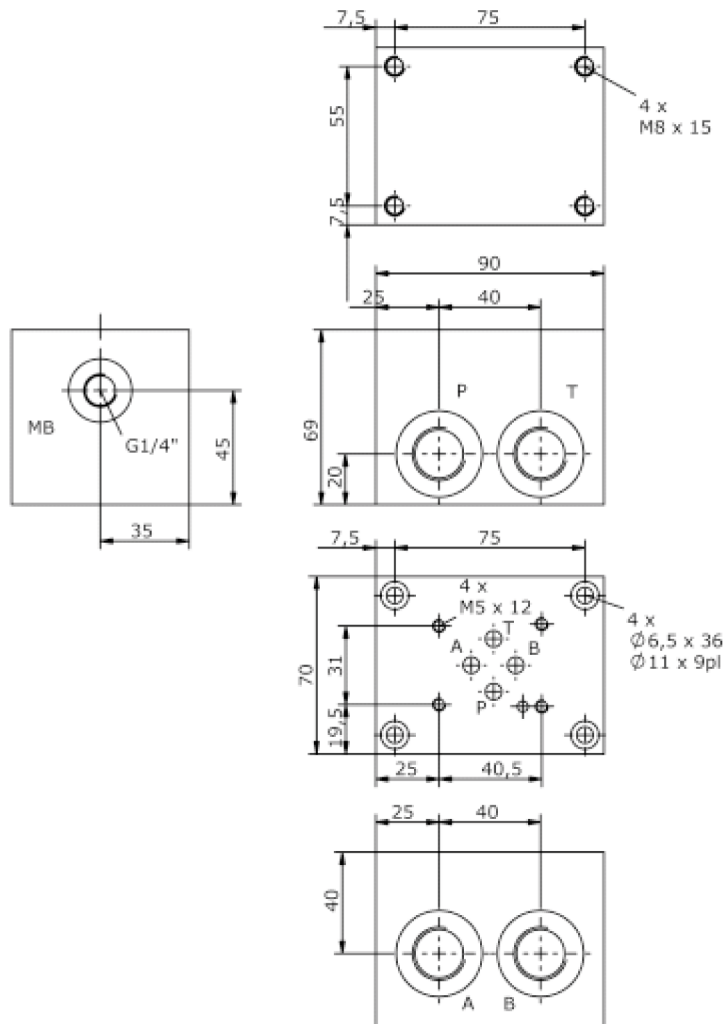
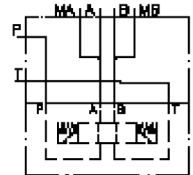


# single mounting plate, CETOP 3 (ports at side)

MEP-06.-B..-B..

IM-100-110-00

(subject to change)



# single mounting plate, CETOP 3 (ports at side)

MEP-06.-B..-B..



Motrac Hydraulik GmbH  
Siemensring 87 - D-47877 Willich  
fon +49-(0)2154-8162.0 - fax +49-(0)2154-8162.499  
e-mail info.miw@motracindustries.com  
internet www.motracindustries.com

IM-100-110-00

(subject to change)



## Ordering example:

MEP - 06A - B04 - B04  
|     |     |     |  
**A**   **B**   **C**   **D**

## Model code:

- |   |  |
|---|--|
| <p><b>A</b>   <b>design</b><br/>single mounting plate</p> <p><b>B</b>   <b>size and material</b><br/>06A = aluminum (F37)<br/>06S = steel (9SMnPb28K resp. GGG-40)</p> <p><b>C</b>   <b>port size P and T</b><br/>B02 = BSPP 1/4"<br/>B04 = BSPP 1/2"</p> | <p><b>D</b>   <b>port size A and B</b><br/>B02 = BSPP 1/4"<br/>B03 = BSPP 3/8"<br/>B04 = BSPP 1/2"</p> |
|---|--|

## Technical Data:

**nominal pressure:**     250 bar (A)  
                                  350 bar (S)

**weight:**                    1.3 / 3.5 kg (A/S)