

# counterbalance valve, screw-in type ((adjustable) vented)

CBPG-08.-.-0-..

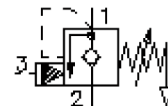
**BUCHER**  
hydraulics



Motrac Hydraulik GmbH  
Siemensring 87 - D-47877 Willich  
fon +49-(0)2154-8162.0 - fax +49-(0)2154-8162.499  
e-mail info.miw@motracindustries.com  
internet www.motracindustries.com

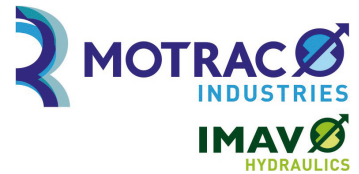
**CC-420-081-00**

(subject to change)



# counterbalance valve, screw-in type ((adjustable) vented)

CBPG-08.-.-0-..



Motrac Hydraulik GmbH  
Siemensring 87 - D-47877 Willich  
fon +49-(0)2154-8162.0 - fax +49-(0)2154-8162.499  
e-mail info.miw@motracindustries.com  
internet www.motracindustries.com

CC-420-081-00

(subject to change)

**BUCHER**  
hydraulics

## Ordering example:

CBPG - 08N - C - 0  
|        |        |        |  
**A**    **B**    **C**    **D**

## Model code:

- |   |  |
|---|--|
| <b>A</b> <b>design</b><br>counter balance valve                               | <b>D</b> <b>construction</b><br>0 = screw-in valve |
| <b>B</b> <b>size and sealing</b><br>08N = Buna (NBR)<br>08V = Viton (FPM)     |  |
| <b>C</b> <b>adjustment</b><br>S = screw adjustment<br>C = cap<br>K = handknob |  |

## Technical Data:

<b>nominal pressure:</b>	350 bar
<b>nominal flow:</b>	38 l/min
<b>weight:</b>	
<b>temperature range:</b>	-40°C to 120°C
<b>fluids:</b>	hydraulic oil as per DIN 51524 T1 (ISO TC 131)
<b>max. leakage:</b>	5 drops/min at 22 cSt (50°C) and approx. 20% below the setted crack pressure
<b>seals:</b>	optional Buna (NBR) or Viton (FPM), as well as Teflon wascher (PTFE)
<b>crack pressure:</b>	0.4 - 0.6 bar ( check valve)
<b>cavity:</b>	C-08-3S see datasheet no. <a href="#">IK-200-089-00</a>
<b>housing:</b>	3SLH-08.-B.. see datasheet no. <a href="#">IH-200-000-00</a>
<b>seal kit:</b>	SP-CDS-08N-33S (NBR), SP-CDS-08V-33S (FPM)